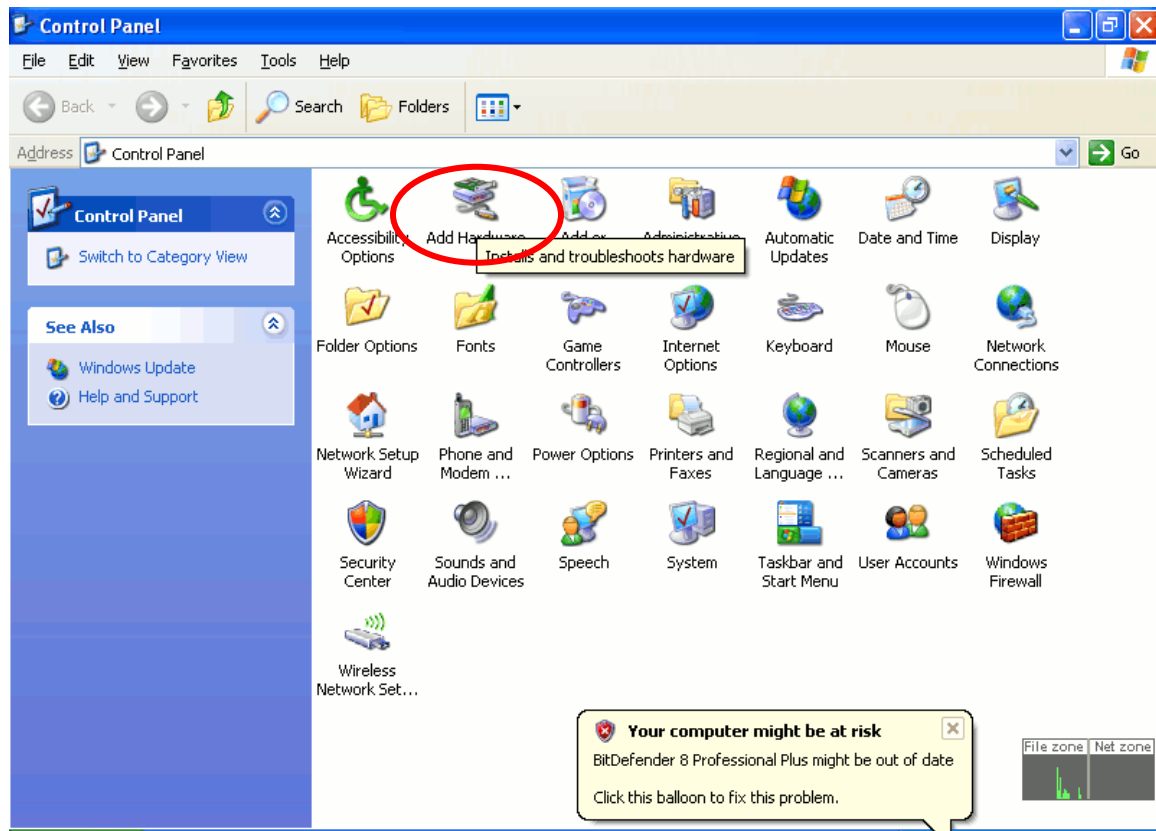


Manual Installation Procedures for ACR30S PCSC driver on Windows XP SP2 and XP 64-bit version

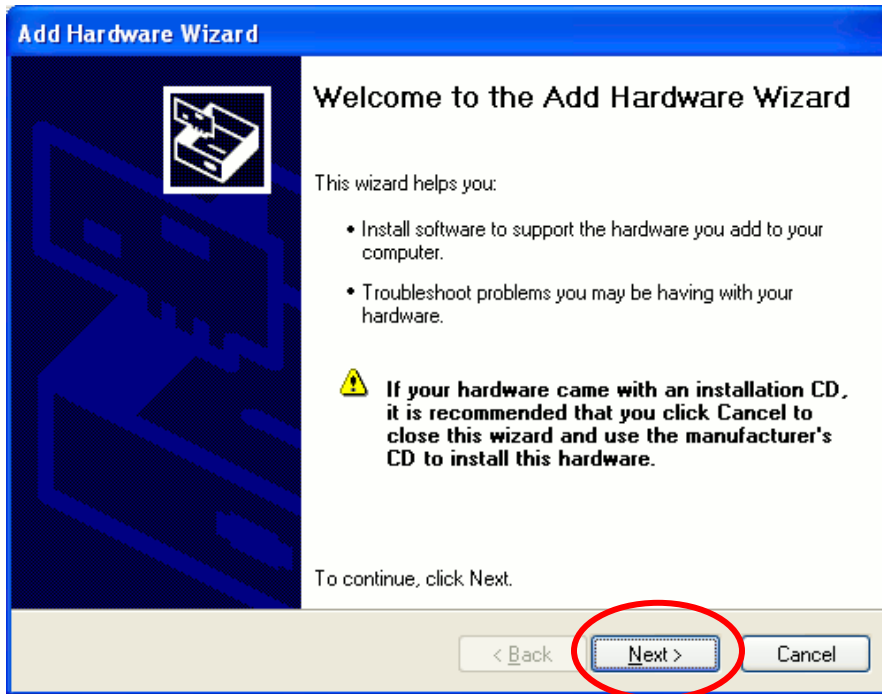
The driver installation is divided into two phases. The 1st phase installs a virtual COM port driver that will be used to detect the presence of ACR30S on Windows system. The 2nd phase installs the PCSC driver for ACR30S on Windows system.

Step 1-1:

Bring up the [Control Panel] and choose [Add Hardware] as shown in the following figure.



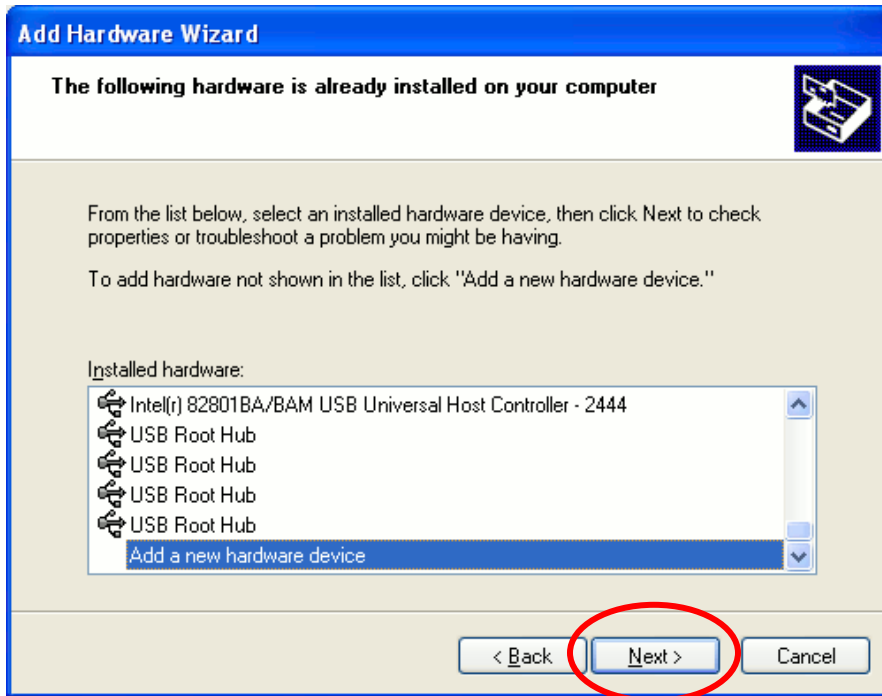
Step 1-2:
Click [Next] to continue adding new device.



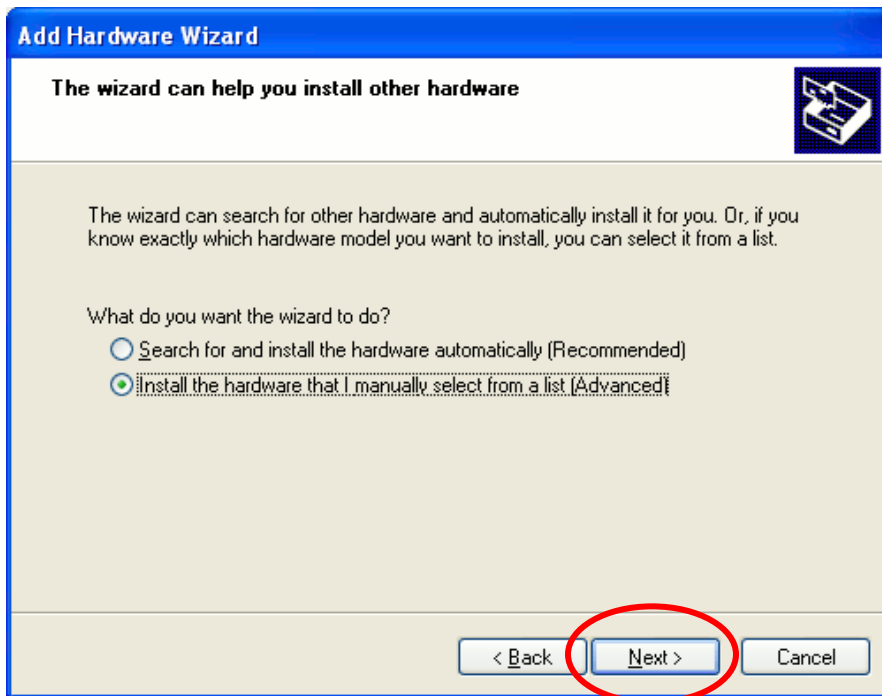
Step 1-3:
Choose [Yes, I have already connected the hardware] and click [Next]



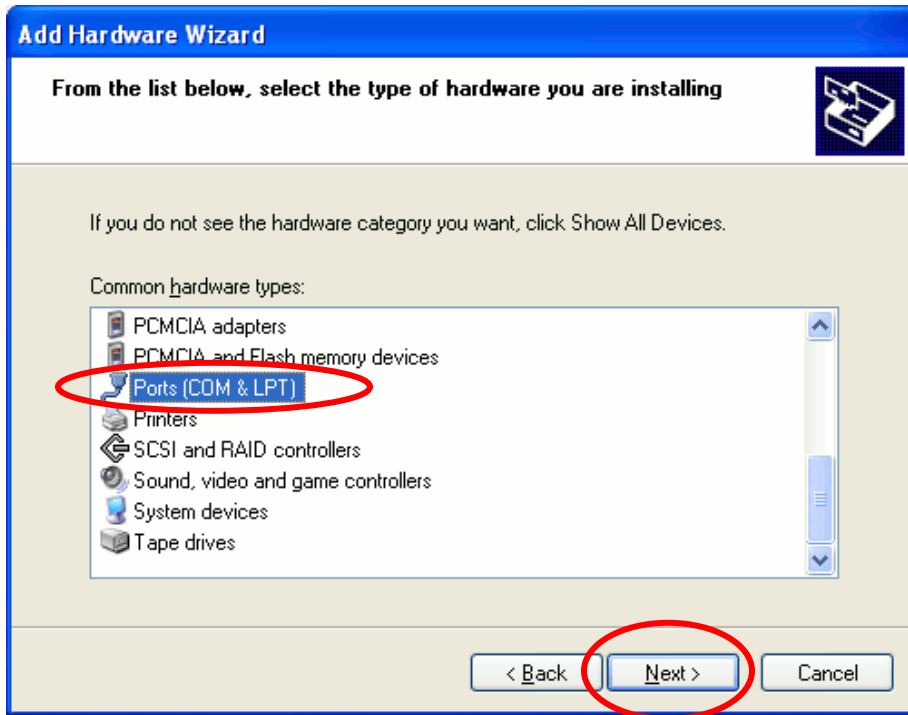
Step 1-4:
Choose [Add a new hardware device] and click [Next]



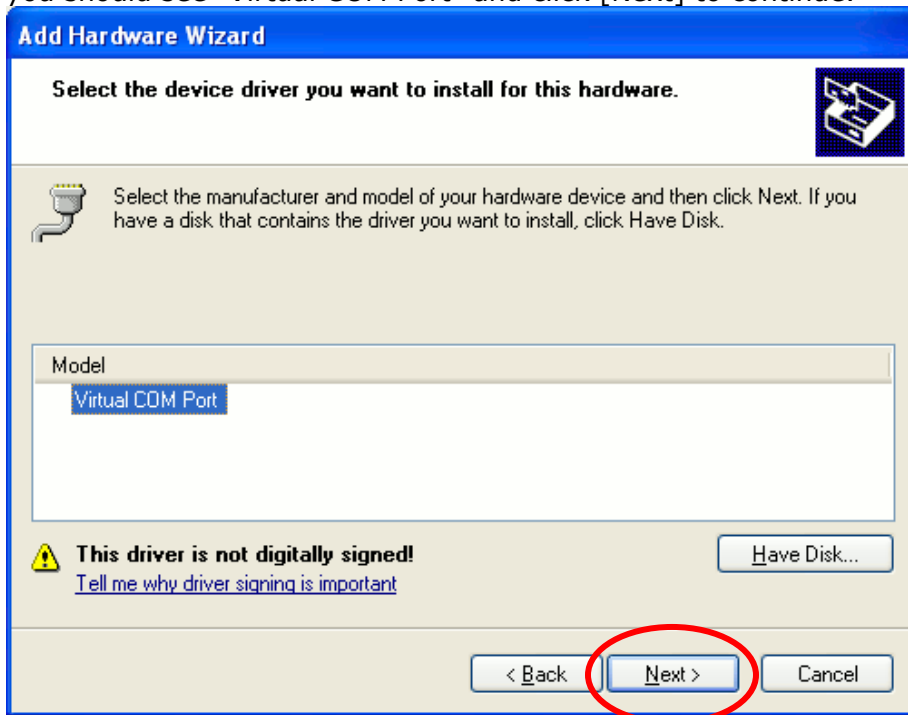
Step 1-5:
Choose [Install hardware that I manually select from a list [Advanced]] and choose [Next]



Step 1-6:
Choose [Ports [COM & LPT]] and click [Next]



Step 1-7:
Choose [Have Disk...] and specify the location of vcombus.inf and click [OK]. Then you should see "Virtual COM Port" and click [Next] to continue.



Step 1-8:

Windows will start installing driver for the "Virtual COM Port" as show below. Click [Next] to continue.



Step 1-9:

When Windows prompts to choose [Continue Anyway] or [STOP Installation], choose [Continue Anyway] to finish the driver installation.



After the installation of "Virtual COM Port" driver, it will check if ACR30S is connected to the PC or not. ACR30S must be connected to COM1 of the computer in order for the port driver to detect its existence.

The following describes the second phase of the driver installation steps.

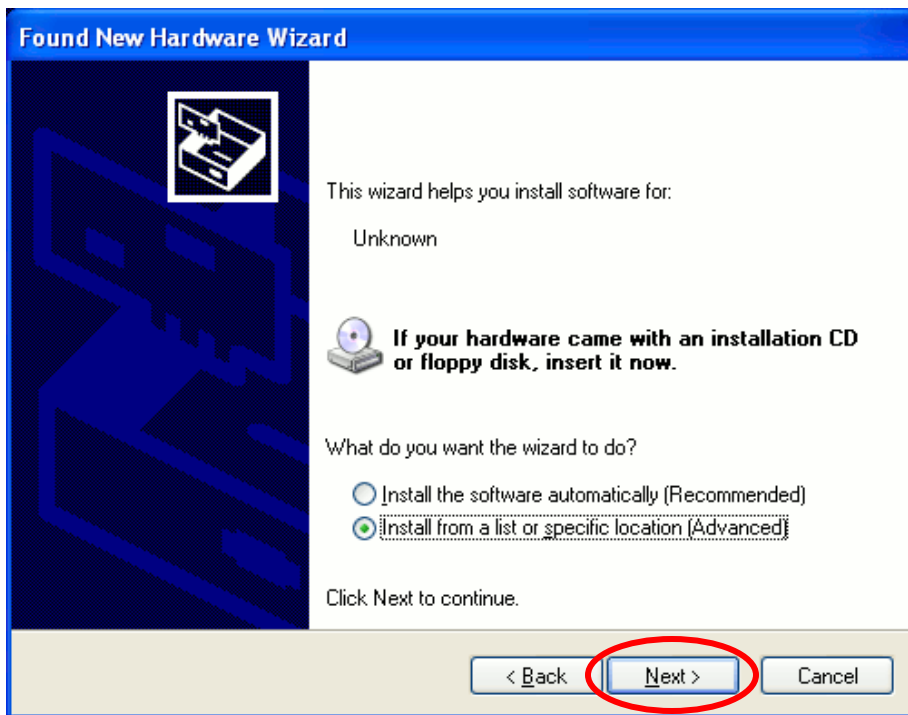
Step 2-1:

Windows will ask user if it should connect to Windows Update to search for the required driver. Choose [No, not this time] and click [Next] to continue.



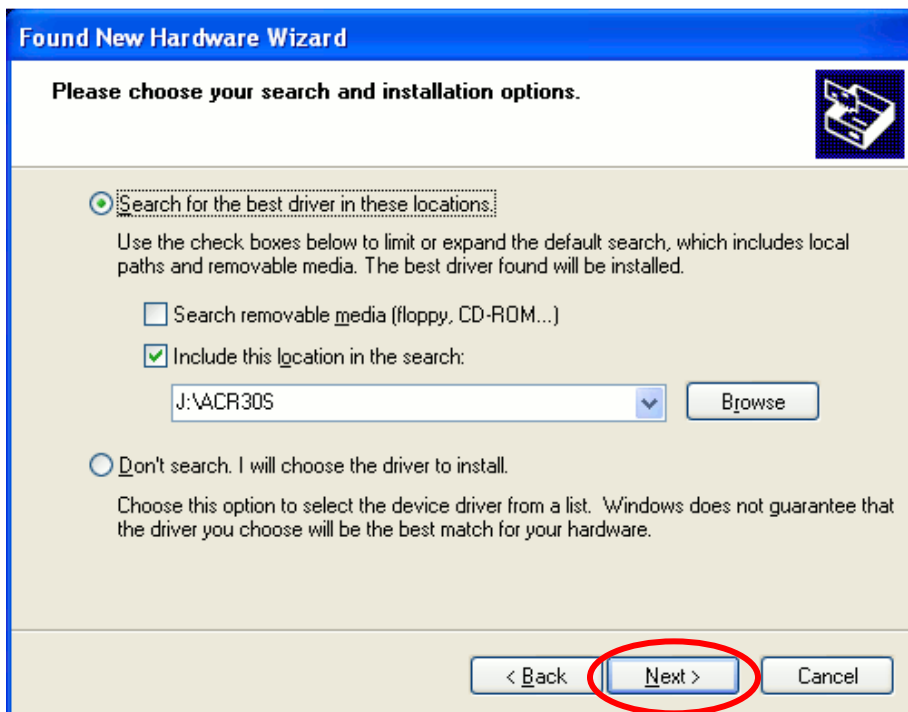
Step 2-2

Choose [Install from a list of specific location [Advanced]] and click [Next] to continue.



Step 2-3

Specify the location to acrxp64.inf or acrxpsp.inf and click [Next] to continue.



Step 2-4

When Windows prompts to choose [Continue Anyway] or [STOP Installation], choose [Continue Anyway] to finish the driver installation.



Step 2-5

Finally, Windows will show the following screen. Click [Finish] to finish the driver installation for ACR30S PCSC driver on XP SP2 or XP 64-bit version.

