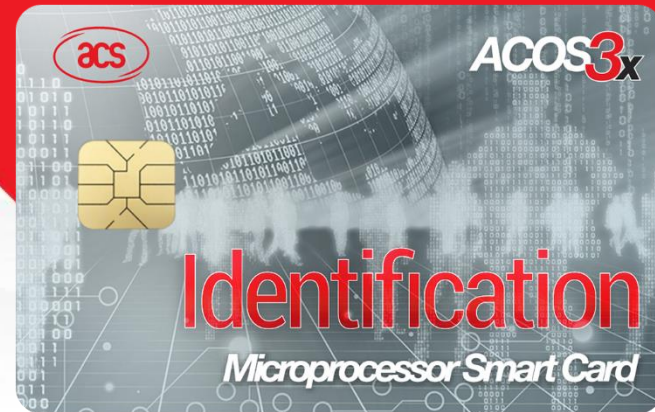




ACOS3X

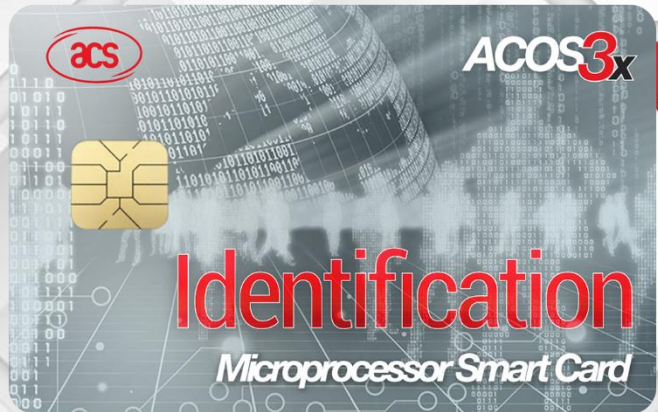


Advanced Card Systems Ltd.
Card & Reader Technologies

Outline

1. Product Information
 - Product Overview
 - Product Features
 - Technical Specifications
 - Certifications/Compliance
2. Product Applications





Product Information

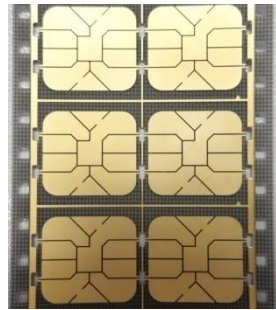


Advanced Card Systems Ltd.

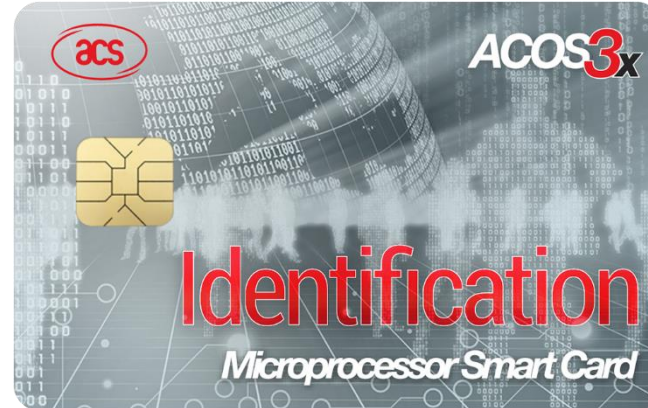
Card & Reader Technologies

Product Overview

ACOS3X (256KB EEPROM)



Module



Full-sized Card



Key Features of ACOS3X

KEY FEATURES

- Based on ACOS3 platform with larger EEPROM memory size and faster processing time
- 256 KB EEPROM Size
- High Baud rate of up to 223.2 Kbps with modifiable ATR
- Account data structure for highly secure payment applications as an optional feature
- Maximum support of 128 user files
- Can be paired with ACOS6-SAM for key diversification and mutual authentication

SECURITY FEATURES

- DES/3DES
- AES
- 5 secret codes + issuer code
- Session key based on FIPS 140-2 compliant true random numbers
- PIN code that can be updated by card holder

COMPLIANCE TO STANDARDS

- ISO 7816 Parts 1, 2, 3 supporting the T=0 direct protocol



Technical Specifications

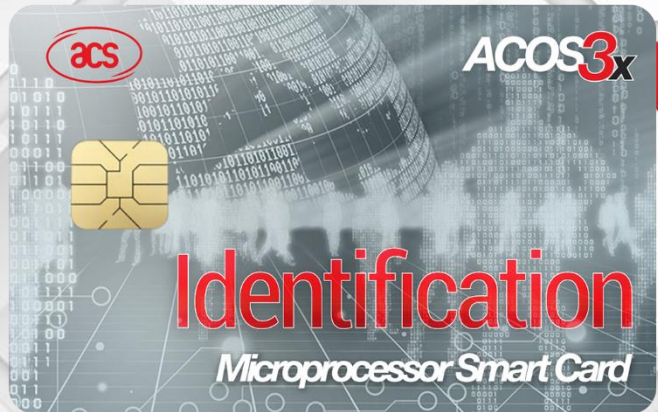
ACOS3X	
Product Code	ACOS3X-E
User EEPROM Memory	
User Memory	256 KB
Compliance to ISO Standards	
Contact	ISO 7816 – 1/2/3 ✓
Communication Speed and Protocol: Contact Interface	
Protocol	T=0
Speed	223.2 kbps
Operating Conditions	
Temperature	-25 °C to 85 °C



Technical Specifications

ACOS3X	
File System	
Transparent (Binary File)	✓
Linear Fixed Record	✓
Cryptographic Capabilities	
DES/3DES	56/112 bits
AES	128/192 bits
MAC	✓
Secure Messaging	✓
Mutual Authentication	✓
Random Number Generator	✓





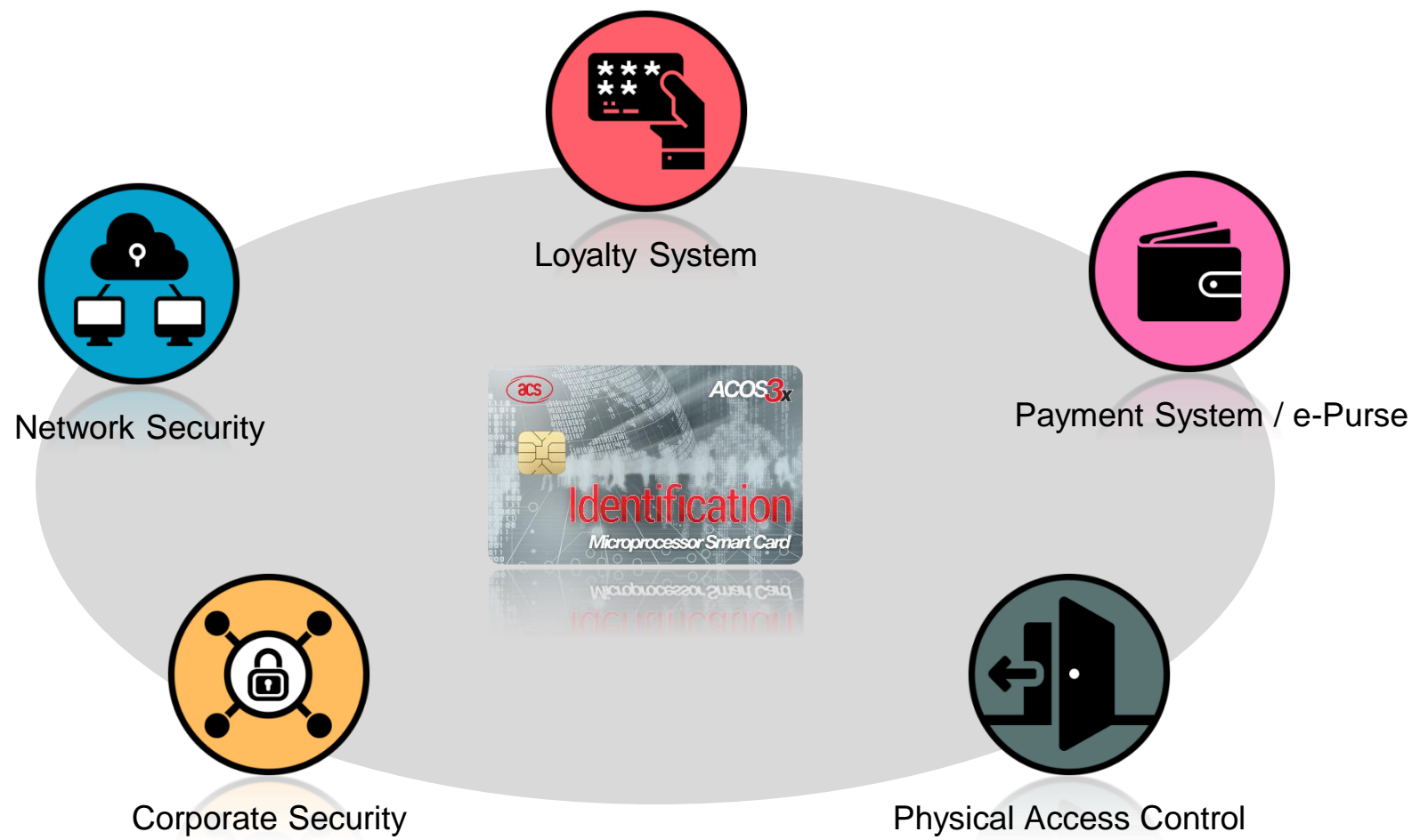
Product Applications



Advanced Card Systems Ltd.

Card & Reader Technologies

In what areas can the ACOS3X be used?



How to Use ACOS3X - Overview

Sample Scenario: Student Card Application

Student ID (ACOS3X Card)



- Information stored
e.g.:
1. Student Name
 2. Gender
 3. Biometric Data (Fingerprint)
 4. e-Purse amount
 5. Library record

SAM cards are stored inside the device for mutual authentication

- Authenticate the data received from the student card inserted, and prove to the cards the authenticity of the terminal.



Smart Card Reader (e.g., ACR1281)



Classroom

- Classroom door access
- Records the attendance in the school database



Computer Center

- Printing services payment
- Computer Login



Library

- Borrow books
- Transactions are transferred to library database





Thank You!



Advanced Card Systems Ltd.
Card & Reader Technologies

info@acs.com.hk
www.acs.com.hk