



Advanced Card Systems Ltd.
Card & Reader Technologies

ACR122 NFC Contactless Smart Card Reader



Driver Installation Guide



1.0 Introduction



The ACR122 is a PC-linked Contactless Smart Card Reader/Writer developed on the 13.56MHz Contactless Technology. It is the world's first CCID Compliant Contactless Card Reader/Writer that follows both ISO14443 and ISO18092. This device is designed to support not only MiFare and ISO14443 Type A and B Cards but also FeliCa and NFC tags.

By making use of up to 424 Kbps for NFC Tags access and full USB speed of up to 12 Mbps, ACR122 can read and write faster and more efficiently. Furthermore, ACR122 is also PC/SC compliant which allows interoperability for different applications development. With its compact size and trendy design and with the various features the ACR122 offers, you can experience the convenience in using ACR122 for applications of payment, mass transit, access control, time attendance, etc.

2.0 Features

- CCID Standard
- PC/SC compliant
- Read / Write Speed up to 424kbps
- ISO/IEC18092 (NFC) compliant
- ISO14443 Type A and B card support
- Support Mifare® card
- Support FeliCa card
- USB PnP
- Bi-Color LED
- Compact size: 98mm (L) x 65mm (W) x 12.8mm (H)
- Light Weight: 70g
- CE, FCC and RoHS compliant
- User Controllable Buzzer (optional)

3.0 Typical Applications

- Network access control
- Micro-payment
- NFC mobile tag
- Public Transportation Terminals
- Automatic Fare Collection
- Physical access control
- Customer Loyalty
- Time attendance
- Contactless public phones
- Vending machines





4.0 Installation Procedure

4.1 Method 1: Microsoft CCID Driver Installer

1. Plug the ACR122U into the USB port of PC, and the LED will light up

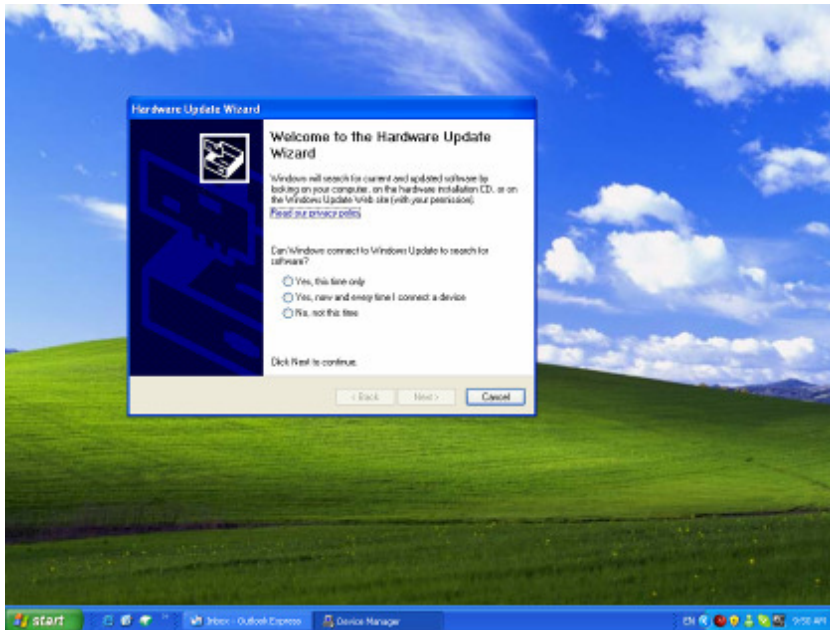


2. PC shows "found new hardware".

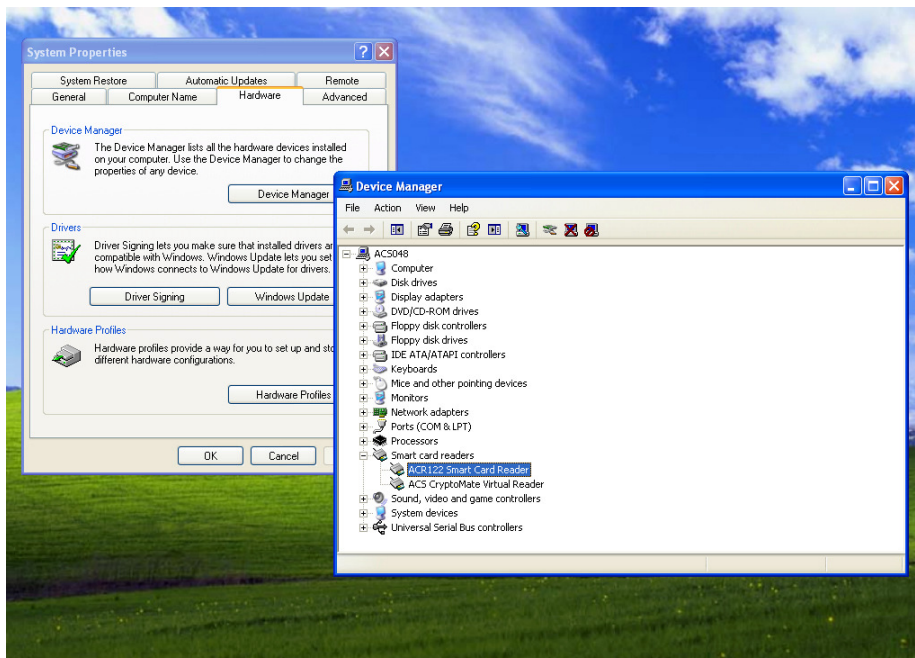




3. “Hardware Update Wizard” comes up and then goes for the driver installation by clicking “Next”. It will install the ACR122U driver automatically through the Windows Update.



4. After successfully installing the ACR122U driver, in the Device Manager, it shows there is USB “Smart Card Reader” in the item of Smart Card Readers. Then, you can start working with ACR122U.

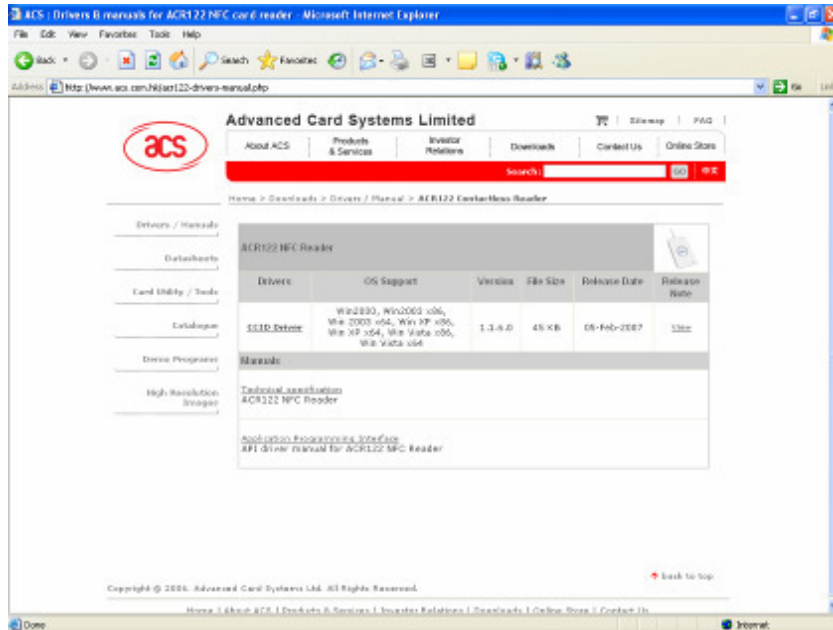




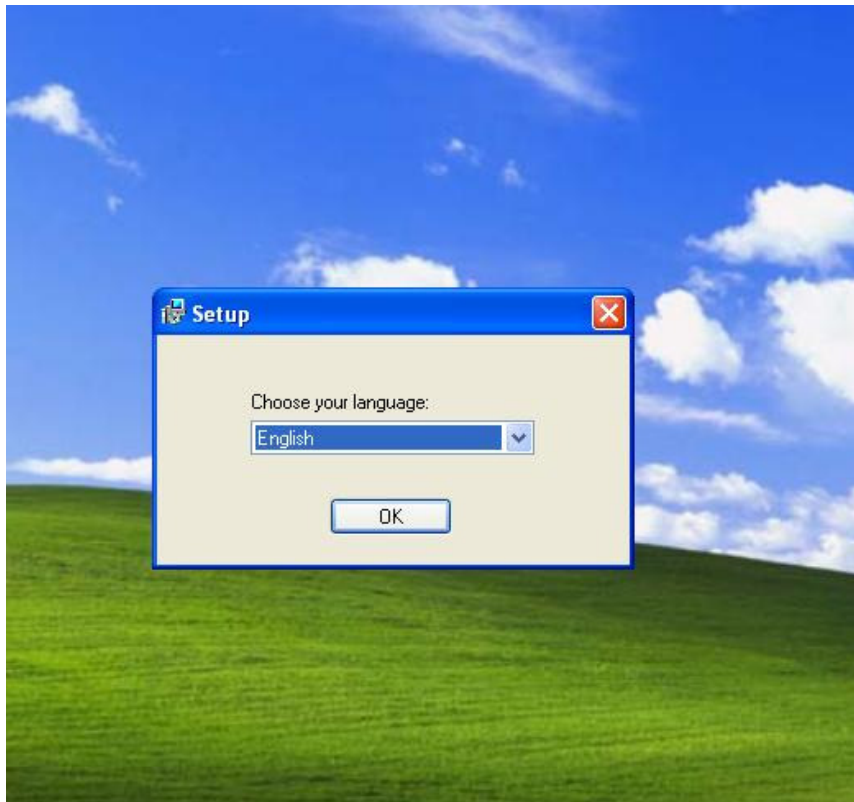
4.2 Method 2: ACS CCID Driver Installer

1. In case Windows Update is not available, ACR122U MSI driver installer can be installed manually. Please go to <http://www.acs.com.hk/drivers-manual.php?driver=ACR122>, download the MSI driver installer for ACR122U and unzip the package.

Please make sure the ACR122U is NOT plugged into the PC.

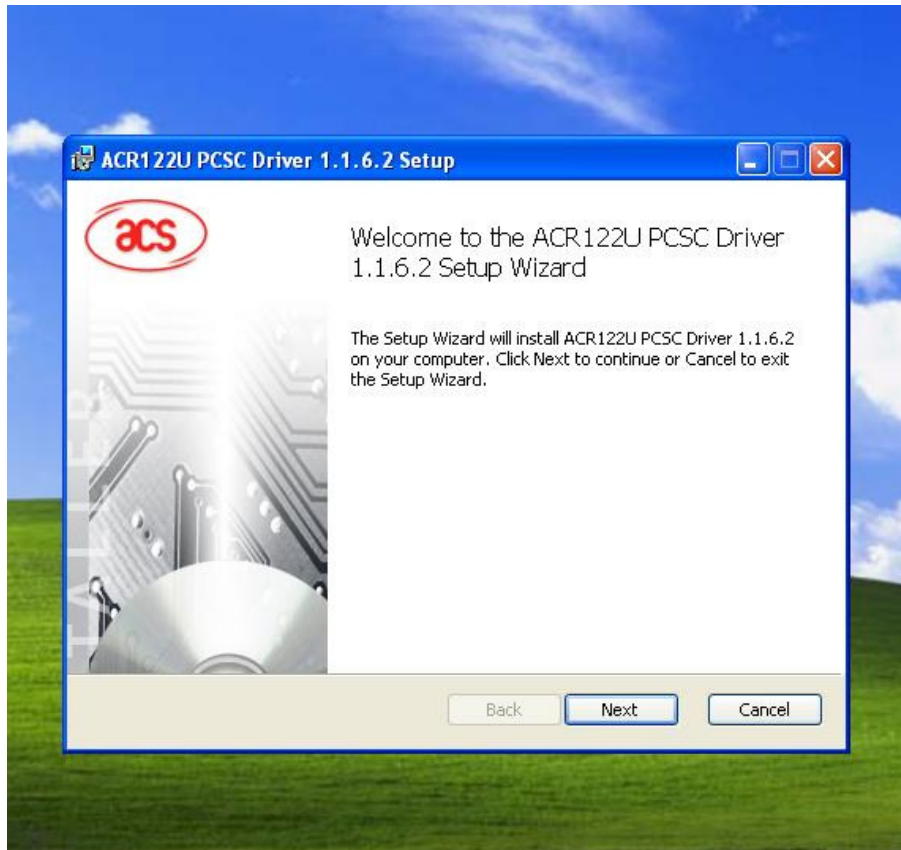


2. Click on the Setup.exe and choose the appropriate language. Click OK

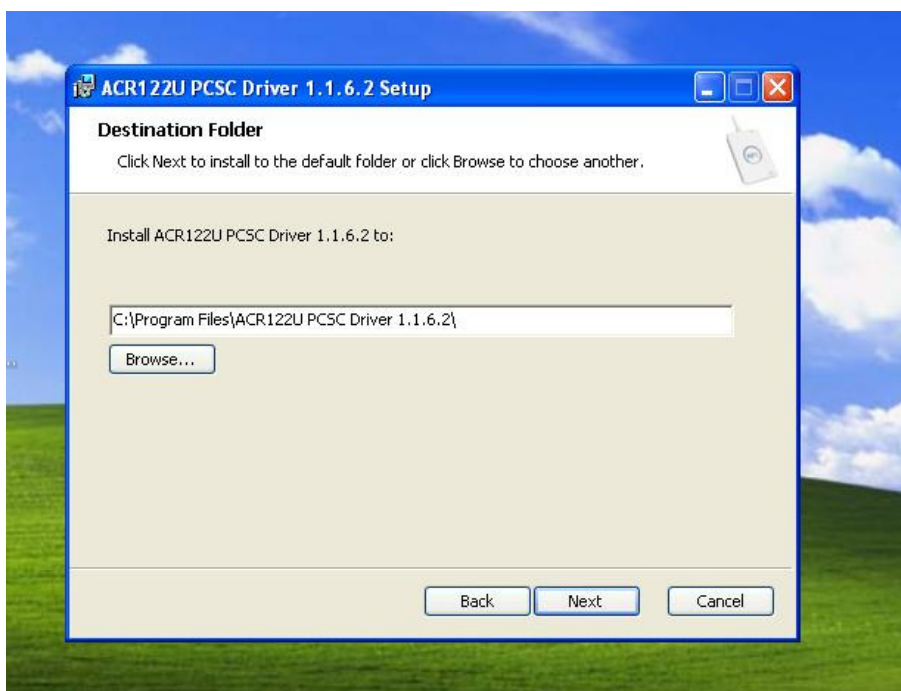




3. Click "Next" when welcome message appears.

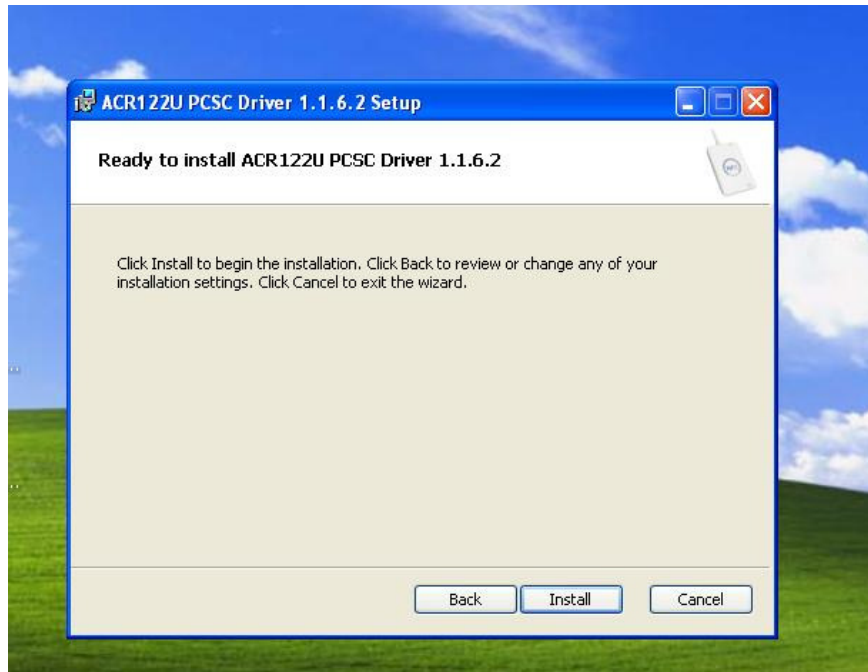


4. Choose the appropriate path (if necessary) to install the ACR122 driver files.





5. Click "Install" to begin the driver installation



6. After successfully installing the ACR122U driver, plug the ACR122U into the USB port of PC, and the LED will light up. Then, you can start working with ACR122U.

