



ACR89U-A2

Handheld Smart Card Reader (Contactless Version)



Advanced Card Systems Ltd.

Card & Reader Technologies

Units 2010-2013, 20th Floor
Chevalier Commercial Centre
8 Wang Hoi Road, Kowloon Bay, HK
Tel: +852-27967873 Fax: +852-27961286
info@acs.com.hk www.acs.com.hk

1. Product Overview
2. Product Features
3. Product Value
4. Product Application



Product Overview



Advanced Card Systems Ltd.

Card & Reader Technologies

ACR89U-A2 (Contactless Version)

The ACR89U-A2 Handheld Smart Card Reader with NFC tag support is primarily designed for applications that require access to both contact and contactless smart cards following ISO 7816 and ISO 14443 standards.

ACR89U-A2 is an upgrade version of ACR88-CL which offers better performance, longer battery life, and with optional thermal printer support.





ACR89U-A1
(Standard Version)

ISO 7816 Class A, B, C
Memory Cards (ICC Slot 0)



PTR89
(Thermal Printer for ACR89)



ACR89U-A2
(Contactless Version)

Standard + ISO 14443, FeliCa, NFC Tags



Product Features



Advanced Card Systems Ltd.

Card & Reader Technologies

Product Features

USB Host Interface
 USB Full Speed (12 Mbps)
 Protocol: USB CCID

Contact Card Type Support
 2 Full-sized Smart Cards + 3 SAM
 ISO 7816 Class A , B, C
 MCU with T=0 and T=1 Protocol

Contactless Card Type Support
 ISO 14443 A and B Parts 1-4
 ISO/IEC 18092 (NFC),
 MIFARE®, FeliCa

Smart Card Interface
 PC/SC
 CCID
 Secure PIN Entry (SPE)



Contactless



Memory
Third Party Applications:
 512 KB/1 MB NOR Flash
Data Storage:
 384 KB Serial Flash
 64 KB EEPROM

Standalone Mode
 Embedded FreeRTOS
 Lithium-ion Battery: 3.7 V, 900 mAh

Built-in Peripherals
 Graphical LCD with Backlight
 21 characters x 8 lines
 Keypad: 20 keys
 4 tri-colored LEDs – Status Indicator

Other Features
 Firmware Upgradeable
 Optional Thermal Printer (PTR89)

Operating System Support
 Windows®, Linux®, Mac OS®,
 Solaris, Android™*

Certifications/Compliance
 CE , FCC, RoHS 2,
 Microsoft® WHQL

*Visit www.acs.com.hk for the list of supported devices.

Enabled NFC Technology

Supports NFC Tags:

- Tag 1: based on ISO 14443-A (96 bytes), e.g. Topaz
- Tag 2: based on ISO 14443-A (48 bytes), e.g. MIFARE Ultralight®
- Tag 3: based on Japanese Industrial Standard, e.g. FeliCa
- Tag 4: based on ISO 14443-A and B, e.g. MIFARE® DESFire®

Source: <http://www.nfc-forum.org/specs/>

Intelligent Support for Combi and Hybrid Cards

- For Combi card, if it is inserted into the contact card slot, ICC interface will be used and PICC interface will be disabled, as well as PC/SC Polling function for PICCs.
- For Hybrid card, if it is inserted into the contact card slot, both ICC and PICC interfaces will be used to access the Hybrid card.

Combi card = ONE IC chip is shared by two interfaces
Hybrid card = TWO IC chips for two interfaces

Optional



PTR89 (ACR89 Thermal Printer)



Product Value



Advanced Card Systems Ltd.

Card & Reader Technologies

Cost Effective

*All in one design with powerful add-ons at the price of one
(PIN-pad + LED + LCD + Contact Card Support + Printer + Rechargeable Battery)*

High Security

- *Multiple SAM Slots*
- *Dual Smart Card Interface*
- *Secure PIN Entry*
- *Mutual Authentication*

Customer Convenience

- *Easy to read and use*
- *Highly durable and color-coded keypad*
- *Firmware upgradeable*
- *Thermal printer available*

Innovative

- *Ergonomically designed*
- *Long battery life (handles up to 200 transactions)*
- *CCID and PC/SC-compliant*
- *Faster processing time at low cost*



Product Application



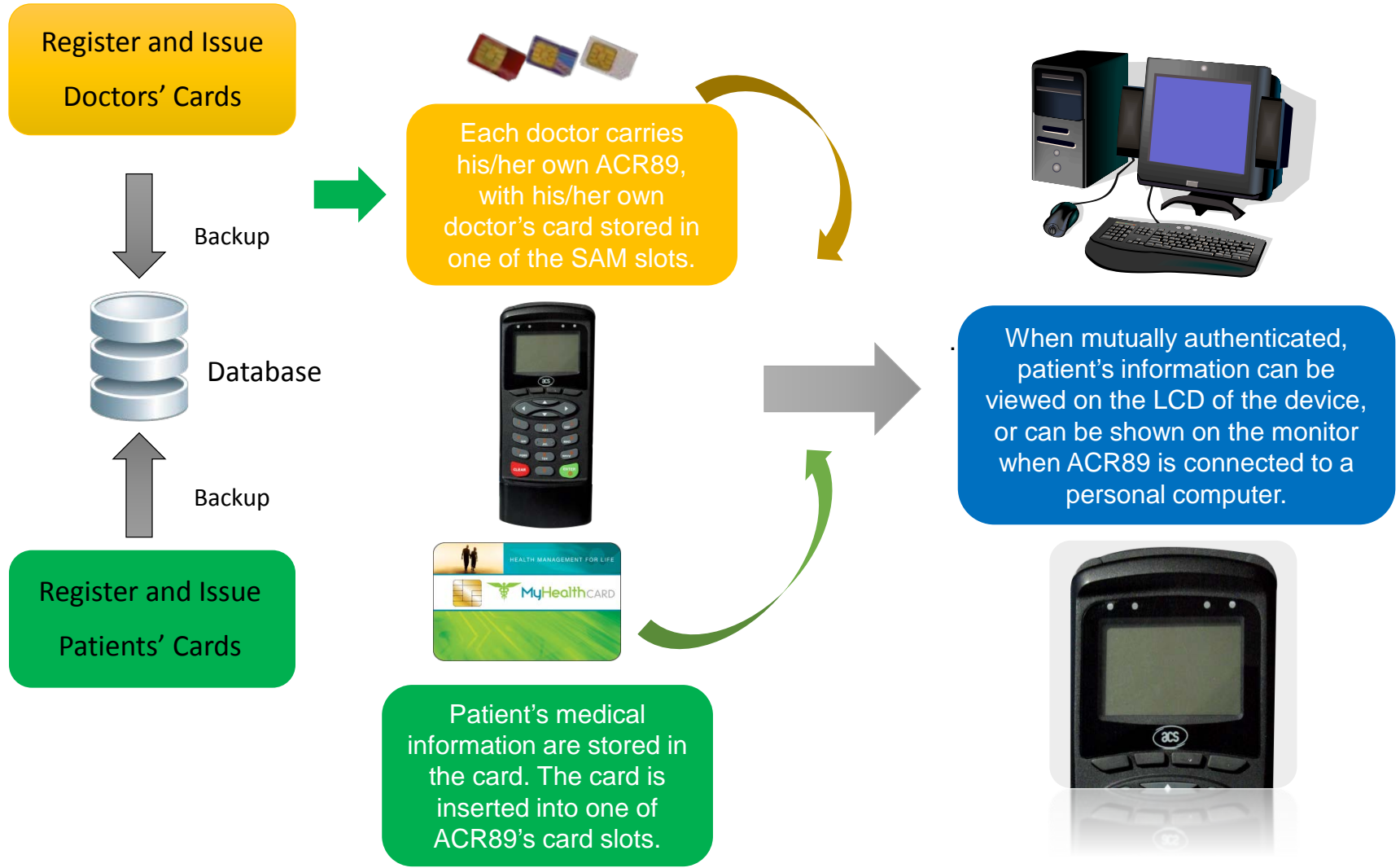
Advanced Card Systems Ltd.

Card & Reader Technologies

Product Application



Sample Application





Thank You!

info@acs.com.hk

www.acs.com.hk



<http://twitter.com/SmartCardReader>



<http://www.facebook.com/AdvancedCardSystems>



<http://gplus.to/advancedcardsystems>



<http://www.youtube.com/user/AdvancedCardSystems>



Advanced Card Systems Ltd.

Card & Reader Technologies