



Advanced Card Systems Ltd.
Card & Reader Technologies



ACOS5-64

Cryptographic Card

A Product Presentation



Rundown

1. Product Overview
2. Product Features
3. Comparison Charts
4. Product Applications
5. Related Products
6. Q & A

A red globe with a grid pattern is positioned in the top right corner of the slide. It is partially cut off by the edge of the frame. The globe is set against a white background with a subtle grid pattern.

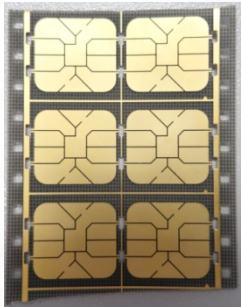
Product Overview

The ACS logo is located in the bottom left corner. It consists of the lowercase letters 'acs' in a bold, red, sans-serif font, enclosed within a red oval border.

acs

Product Overview

ACOS5-64 Series (64 KB EEPROM) Cryptographic Smart Card and Token



Module



Full-Sized Card



SIM-Sized Card



USB Token

A red globe with a grid pattern is positioned in the top right corner of the slide. It is partially cut off by the edge of the frame. The globe is set against a white background with a subtle grid pattern.

Product Features

The ACS logo is located in the bottom left corner. It consists of the lowercase letters 'acs' in a bold, red, sans-serif font, enclosed within a red oval border.

acs

What are the Key Features of ACOS5-64?

Speed and Memory

- 64 KB EEPROM for Application Data
- High Speed Transmission (9600 BPS – 223,000 BPS)
- Configurable ATR
- Anti-tearing Function

Compliances and Certifications

- ISO 7816 Parts 1-4, 8-9 (T=0)
- Common Criteria EAL5+ (Chip Level)
- FIPS 140-2 (US Federal Information Processing Standards) compatible

Cryptographic Capability

- DES/3DES/AES-128/AES-192/AES-256/RSA (up to 4,096 bits)
- On-board RSA processor for key generation, signature and encryption
- Supports SHA-1 and SHA-256 hashing algorithm

Security Functions

- Provides multi-level secured access hierarchy
- Supports Secure Message and MAC
- Supports Mutual Authentication and Session Key Generation

A red globe with a grid pattern is positioned in the top right corner of the slide. It is partially cut off by the edge of the frame. The globe is set against a white background with a subtle pattern of overlapping circles.

Comparison Charts

Comparison Chart



Category		ACOS5-64	CryptoMate64
Product Code		ACOS5-C	ACOS5T-B2
Communication Speed			
Contact	9,600 BPS - 223,200 BPS	✓	✓
	USB Full Speed		✓
User EEPROM Memory			
User Memory		64 KB	64 KB
ISO Standards			
Contact	ISO 7816 – 1/2/3	✓	✓
	ISO 7816 – 4	✓	✓
	ISO 7816 – 8/9	✓	✓



Comparison Chart

Category		ACOS5-64	CryptoMate64
Product Code		ACOS5-C	ACOS5T-B2
Protocol			
Contact	T = 0	✓	✓
File Systems			
Directory File		✓	✓
Transparent (Binary File)		✓	✓
Linear Fixed Record		✓	✓
Linear Variable Record		✓	✓
Cyclic File		✓	✓
EEPROM Endurance			
500,000 write/erase cycles		✓	✓



Comparison Chart



Category	ACOS5-64	CryptoMate64
Product Code	ACOS5-C	ACOS5T-B2
Cryptographic Capabilities		
DES/3DES	✓	✓
3KDES	✓	✓
AES-128/192/256 bits	✓	✓
RSA-512 to 4096 bits (in 256-bit step)	✓	✓
SHA – 1/SHA-2	✓	✓
Secure Messaging	✓	✓
Mutual Authentication	✓	✓
Applications		
E-government (e.g., National ID, Online Filing of Government Documents)	Digital Signature, Secured Network Access Control	Digital Signature, Secured Network Access Control
Logical & Physical Access Control (e.g., Enterprise Security, Time & Attendance, etc.)	Corporate ID, Windows Logon	Corporate ID, Windows Logon
Banking and Financial (e.g., Online banking, insurance, stock trading, etc.)	PKI Application, Network Security	PKI Application, Network Security



A red globe with a grid pattern is positioned in the top right corner of the slide. It is partially cut off by the edge of the frame. The globe is set against a white background with a subtle grid pattern.

Product Applications

The ACS logo consists of the lowercase letters 'acs' in a bold, sans-serif font, enclosed within a red oval border.

acs

In what applications can we use ACOS5-64?



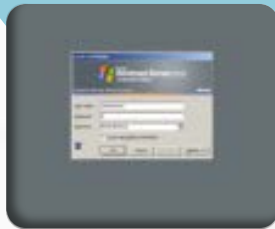
Network Security



Encryption



Digital Signature



Windows Log-on



E-Government Services



E-mail Security

In what areas can we apply ACOS5-64?

Company provides the card to its employees



Employees request for a digital certificate via the company website



Insert ACOS5 in ACR38U PocketMate



Employee uses his/her digital certificate to sign and encrypt the email.



Employee stores the digital certificate in the card



Insert ACOS5 in ACR38U PocketMate



Admin checks the credentials and provides the employee with the link to download and store the certificate in the card



In what areas can we apply ACOS5-64?

Citizens go to Registration Authorities to apply for a Digital Certificate



Certificate Authority provides the citizen with the digital certificate

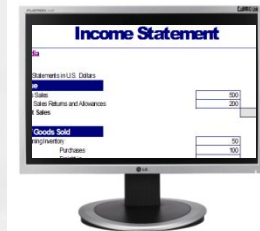


Citizen logs in to a secured website and submits the digitally signed and encrypted document to the government agency



Insert ACOS5 in ACR38U PocketMate

Citizen digitally signs and encrypts his Income Tax Statement using the digital certificate stored in the card



Insert ACOS5 in ACR38U PocketMate



A red globe with a grid pattern is positioned in the top right corner of the slide. It is partially cut off by the edge of the frame. The globe is set against a white background with a subtle pattern of overlapping circles.

Related Products

ACOS5-64 Client Kit



The ACOS5-64 Client Kit is a secure and easy-to-use package solution ideal for managing, protecting and using digital certificates.

Sensitive credentials and private keys can be stored inside the ACOS5-64 Cryptographic Smart Card and not in the threat-susceptible computer, providing added security in storing your digital certificates.

The client kit contains software application, manuals and reference materials to help you manage the certificates stored in the card.

It also contains the middleware so that you can use it for various PKI applications such as signing documents and emails.

Thank You!



For more information visit:

<http://www.acs.com.hk/en/products/17/acos5-64-cryptographic-smart-card/>