



ACM1281U-C7

USB Contactless Reader
Module with SAM Slot



Advanced Card Systems Ltd.
Card & Reader Technologies

Outline

- 1. Product Information**
 - Product Overview**
 - Product Features**
- 2. Product Value**
- 3. Product Applications**
- 4. Compliance/Certifications**





Product Information

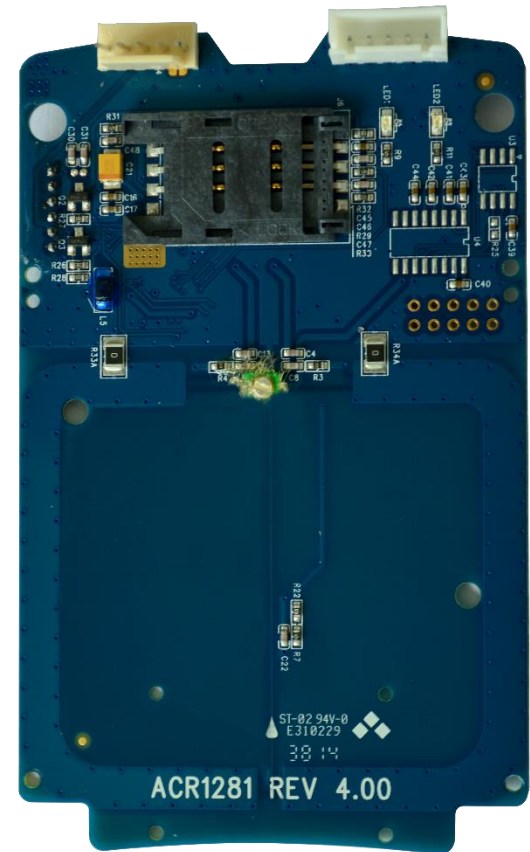


Advanced Card Systems Ltd.

Card & Reader Technologies

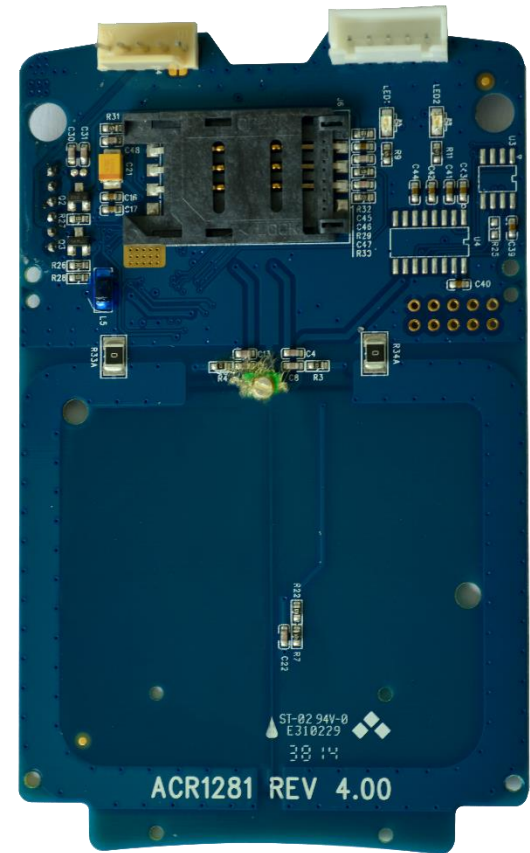
Product Overview

The ACM1281U-C7 has an integrated (on-board) antenna and comes with an optional USB cable. It also has an ISO 7816 Compliant built-in SAM (Secure Access Module) slot, which can be used together with a SAM card for enhanced security.



Product Overview

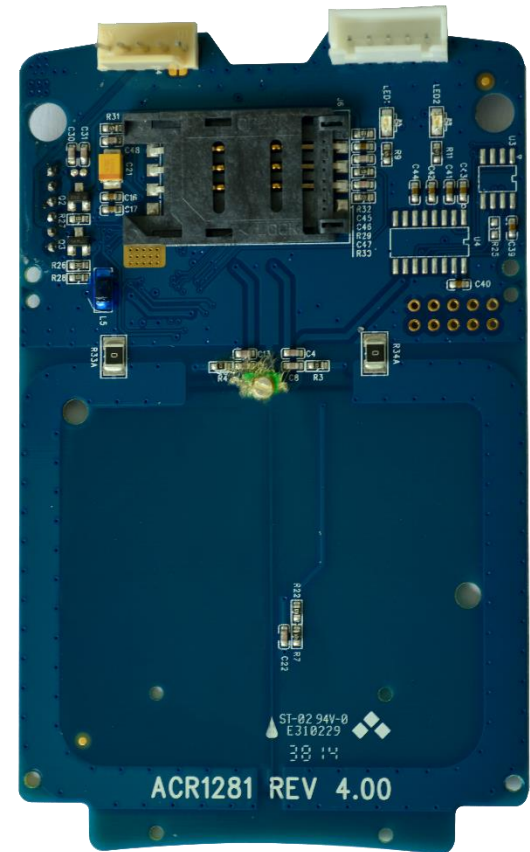
With a maximum of 848 Kbps high-speed communication ability for contactless cards, it is suitable for smart card applications like vending machine payment systems, kiosks, gaming machines and other integrated systems.



Product Overview

This Smart Card Reader Module has additional features like firmware upgradeability and extended APDU support. Post-deployment firmware upgrade is also supported, eliminating the need for additional hardware modification.

Note: The optional USB cable is ordered separately. The USB cable is also detachable.



Product Features



User-controllable Peripherals

2 LEDs
Buzzer

High-Speed Transaction

106 kbps – 848 kbps (Max.)

Certifications/Compliance

ISO 14443, ISO 7816
CE, FCC, PC/SC, CCID
Microsoft® WHQL, RoHS, REACH

Protocols and Standards

ISO 14443 Parts 1-4
ISO 7816 (SAM)
PC/SC and CCID
USB Full Speed (12 Mbps)

Operating System Support

Windows®
Linux®
Mac OS®
Solaris
Android™

Supported Card Types

ISO 14443 Type A and B
MIFARE® Classic, MIFARE Plus®,
MIFARE® DESFire® EV1

Smart Card Interface

PICC (Contactless)
SAM (Contact)

Firmware Upgradeable





Product Value

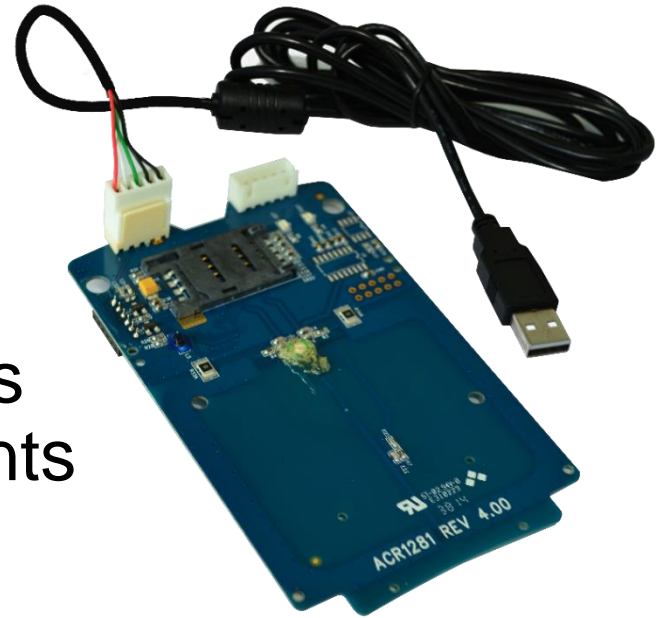


Advanced Card Systems Ltd.

Card & Reader Technologies

Product Value

- Ease of Technology – The ACM1281U-C7 has an integrated (on-board) antenna and comes with an optional USB cable. It also has additional features like extended APDU support.
- Firmware Upgradeable – In-field firmware upgrade function provides support for any future enhancements
- Ease of Integration – PC/SC Compliant Contactless Interface, PC/SC Compliant SAM Interface



Product Value

- PICC Support – ISO14443 Type A & B, MIFARE, MIFARE Plus, MIFARE DESFire EV1
- High Speed Transaction – Baud rate up to 848 Kbps (contactless)
- High Security – SAM slot on board (Contact Interface)





Product Application



Advanced Card Systems Ltd.

Card & Reader Technologies

In what areas can the ACM1281U-C7 be used?



e-Government



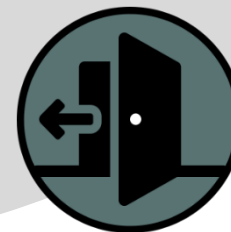
e-Healthcare



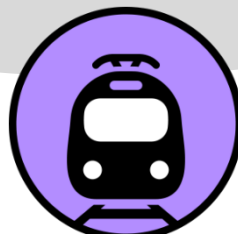
Loyalty



e-Banking and e-Payment



Access Control



Transportation





Compliance & Certifications



Advanced Card Systems Ltd.

Card & Reader Technologies

Compliance & Certifications





Thank You!



Advanced Card Systems Ltd.
Card & Reader Technologies

info@acs.com.hk
www.acs.com.hk