



ACM1281S-C7

Serial Contactless Reader
Module with SAM Slot



Advanced Card Systems Ltd.
Card & Reader Technologies

Outline

- 1. Product Information**
 - Product Overview**
 - Product Features**
- 2. Product Value**
- 3. Product Applications**
- 4. Compliance/Certifications**





Product Information

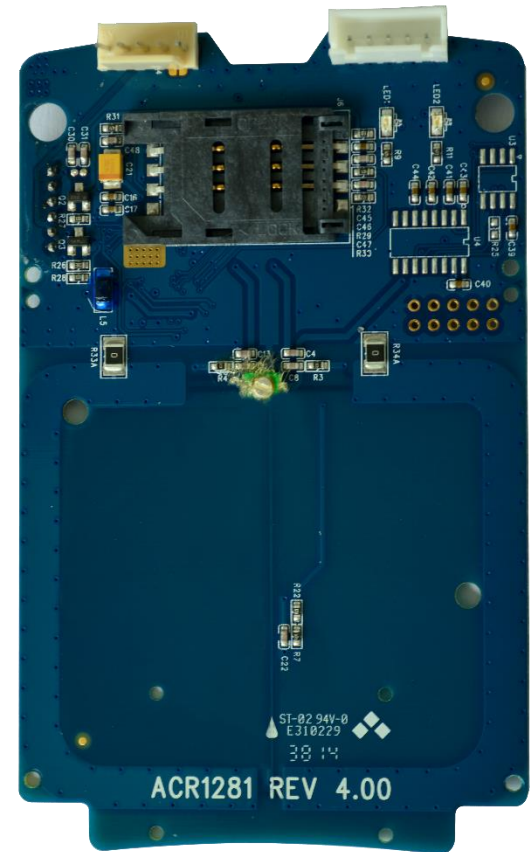


Advanced Card Systems Ltd.

Card & Reader Technologies

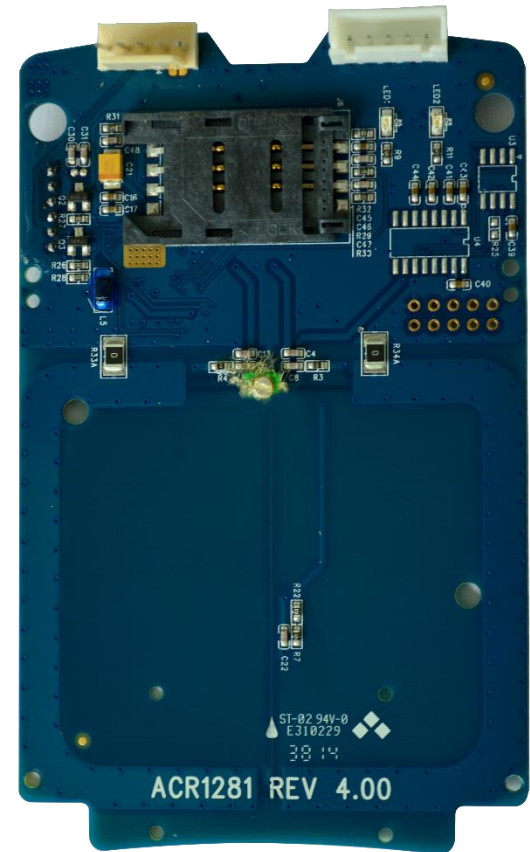
Product Overview

The ACM1281S-C7, designed based on the 13.56 MHz technology, has an integrated (on-board) antenna and comes with an optional serial cable.



Product Overview

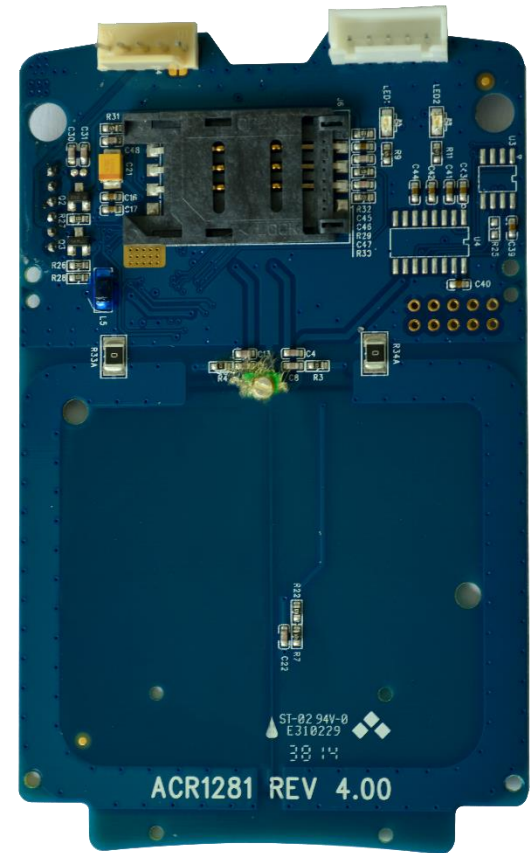
The ACM1281S-C7 has additional features like firmware upgradeability and extended APDU support. It also has an ISO 7816 Compliant built-in SAM (Secure Access Module) slot, which can be used together with a SAM card for enhanced security.



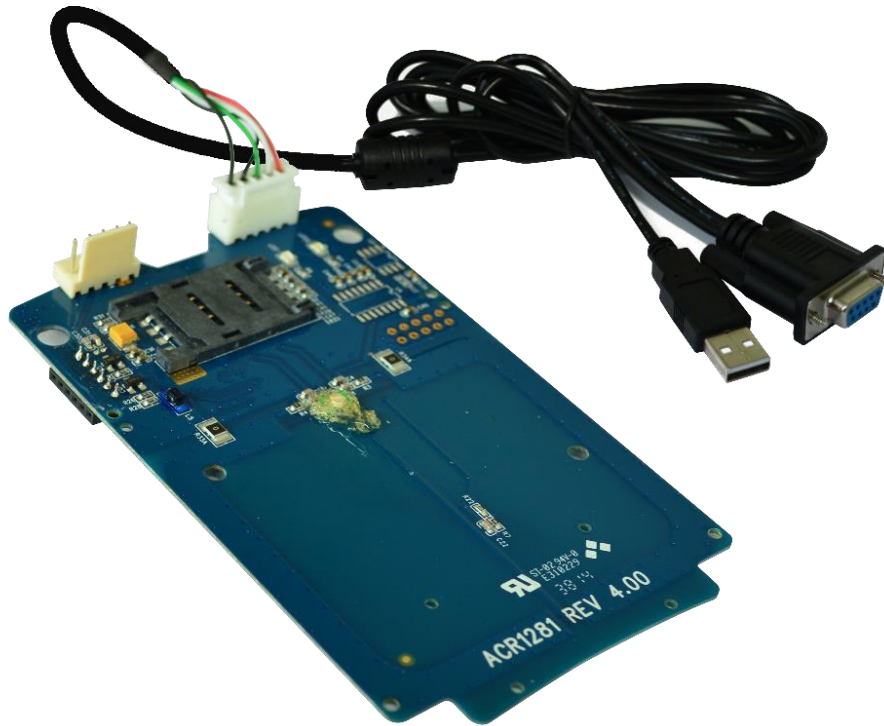
Product Overview

With a maximum of 848 Kbps high-speed communication ability for contactless cards, it is suitable for smart card applications like vending machine payment systems, kiosks, gaming machines and other integrated systems.

Note: The optional serial cable is ordered separately. The serial cable is also detachable.



Product Features



User-controllable Peripherals

2 LEDs
Buzzer

High-Speed Transaction

106 kbps – 848 kbps (Max.)

Certifications/Compliance

ISO 14443, ISO 7816
CE, FCC, PC/SC, RoHS, REACH

Protocols and Standards

ISO 14443 Parts 1-4
ISO 7816 (SAM)
PC/SC

Operating System Support

Windows®
Linux®

Supported Card Types

ISO 14443 Type A and B
MIFARE® Classic, MIFARE Plus®,
MIFARE® DESFire® EV1

Smart Card Interface

PICC (Contactless)
SAM (Contact)

Firmware Upgradeable





Product Value

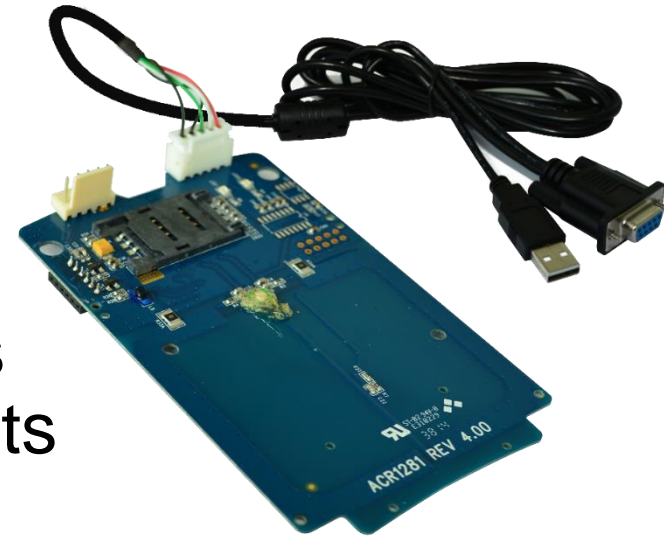


Advanced Card Systems Ltd.

Card & Reader Technologies

Product Value

- Ease of Technology – The ACM1281S-C7 has an integrated (on-board) antenna and comes with an optional serial cable. It also has additional features like extended APDU support.
- Firmware Upgradeable – In-field firmware upgrade function provides support for any future enhancements
- Ease of Integration – PC/SC Compliant Contactless Interface, PC/SC Compliant SAM Interface



Product Value

- PICC Support – ISO14443 Type A & B, MIFARE, MIFARE Plus, MIFARE DESFire EV1
- High Speed Transaction – Baud rate up to 848 Kbps (contactless)
- High Security – SAM slot on board (Contact Interface)





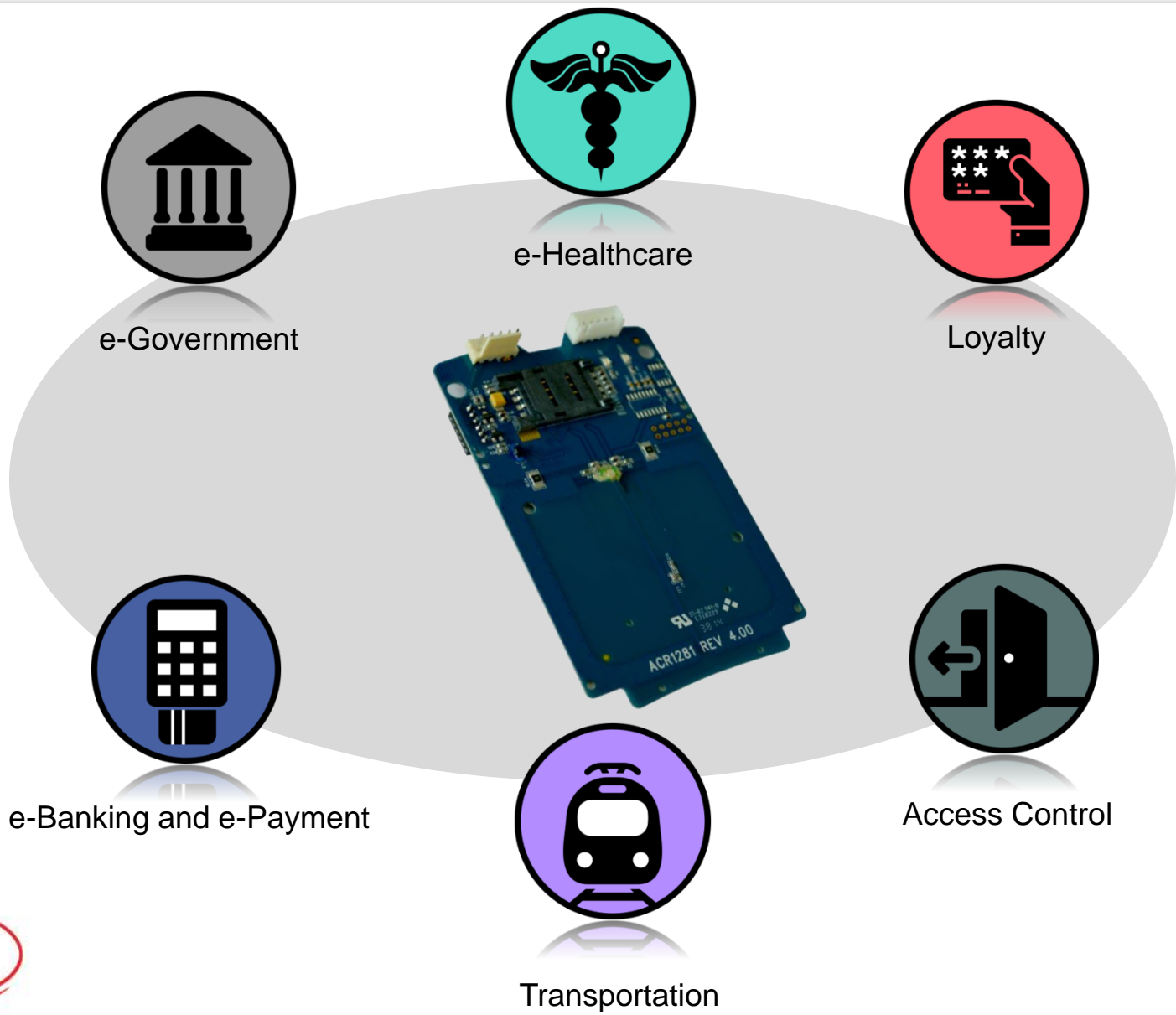
Product Application



Advanced Card Systems Ltd.

Card & Reader Technologies

In what areas can the ACM1281S-C7 be used?





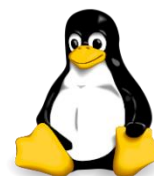
Compliance & Certifications



Advanced Card Systems Ltd.

Card & Reader Technologies

Compliance & Certifications





Thank You!



Advanced Card Systems Ltd.
Card & Reader Technologies

info@acs.com.hk
www.acs.com.hk