



Advanced Card Systems Ltd.
Card & Reader Technologies

ACOSJ CAP Tool



User Manual V1.00



Table of Contents

| | | |
|-------------|---------------------------------|----------|
| 1.0. | Overview | 3 |
| 2.0. | Using the CAP Tool | 4 |
| 2.1. | Open a CAP file | 4 |
| 2.2. | Send commands | 7 |
| 2.2.1. | Reset | 7 |
| 2.2.2. | Select | 7 |
| 2.2.3. | Auth | 8 |
| 2.2.4. | Card | 8 |



1.0. Overview

This user manual provides the instructions on using the Chip Authentication Program (CAP) Tool with ACOSJ card and smart card readers developed by Advanced Card Systems Ltd.

2.0. Using the CAP Tool

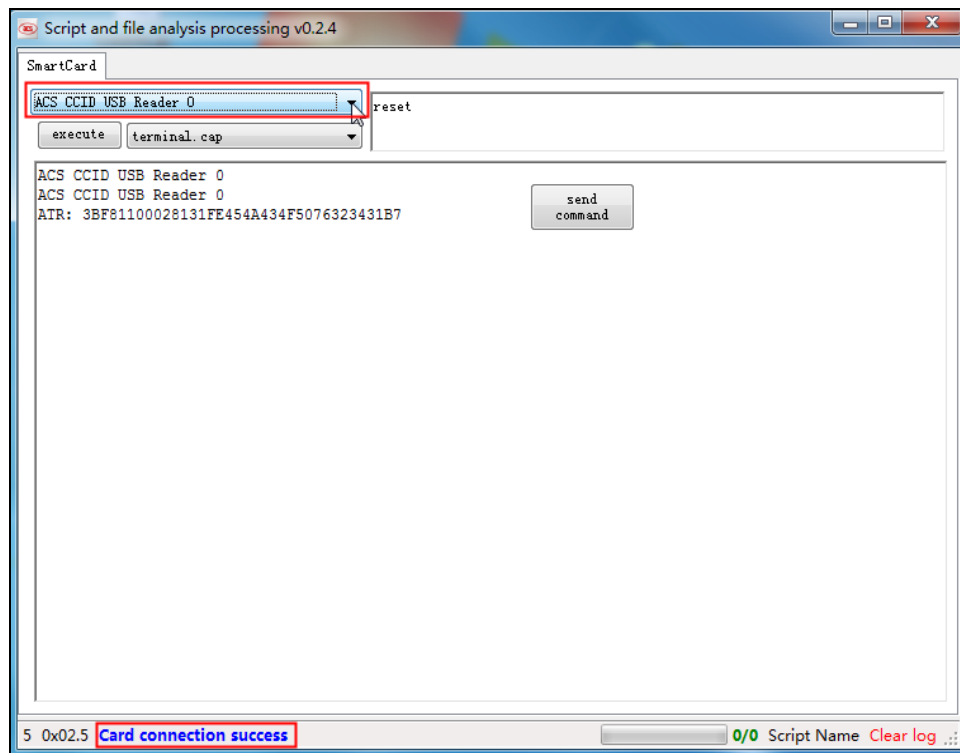
2.1. Open a CAP file

Below are instructions to open and configure a CAP file using the CAP Tool with an ACS smart card reader.

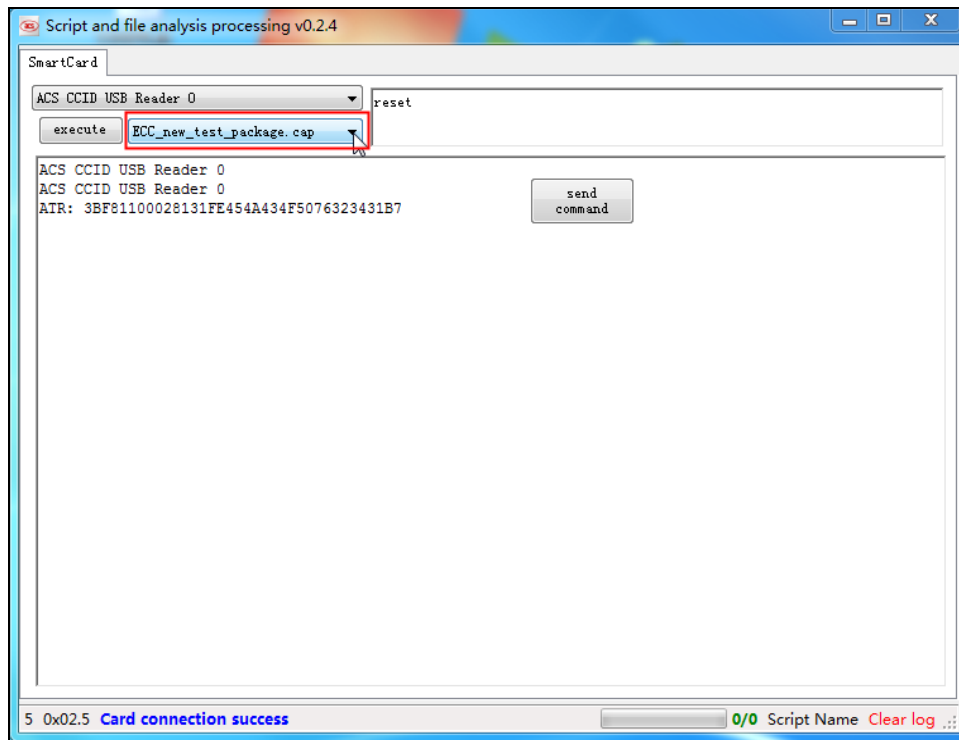
To open a CAP file:

1. Open the **CAP Tool** application.
2. Select the intended smart card reader.

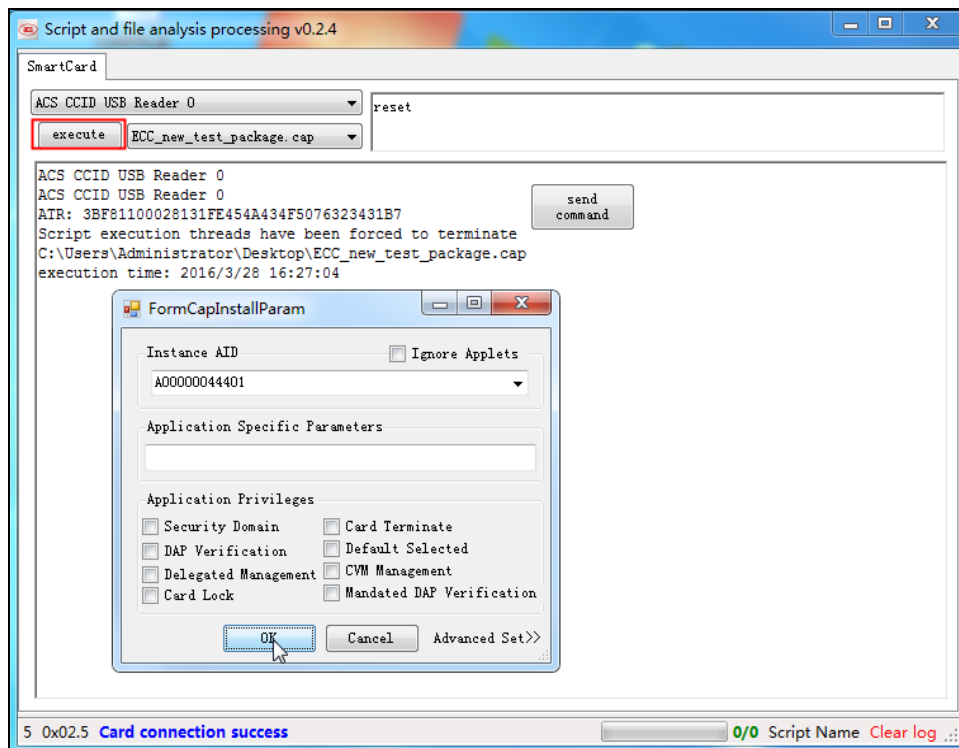
Note: If a smart card is connected in the reader, it is also shown in the application.



- The available CAP files are shown under the smart card reader selection. Choose the intended CAP file.

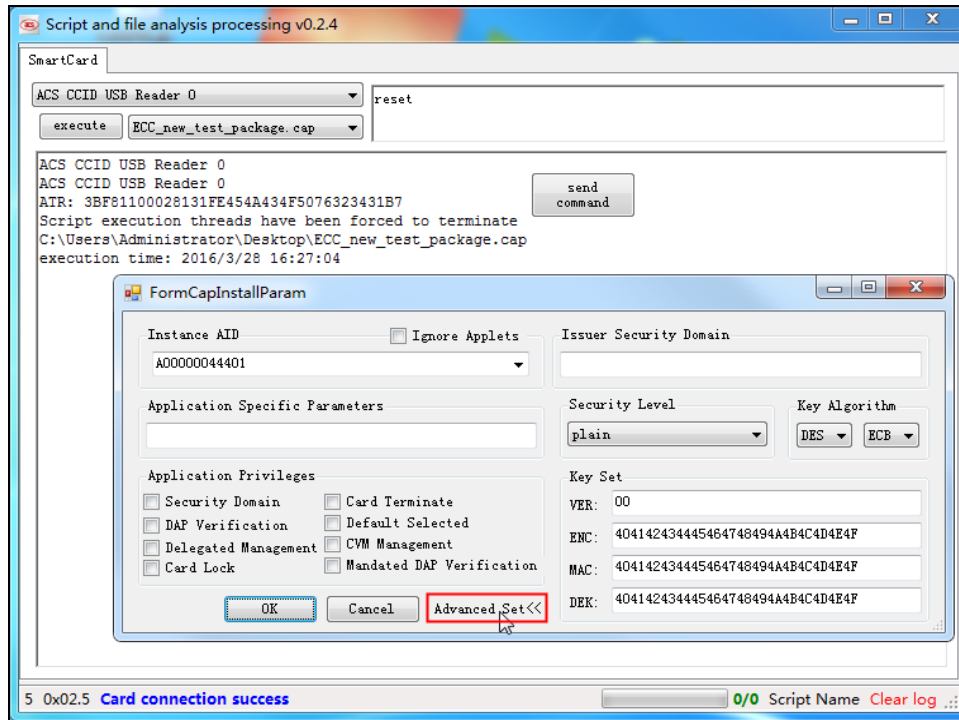


- Click **execute**. The **FormCapInstallParam** box will pop up.

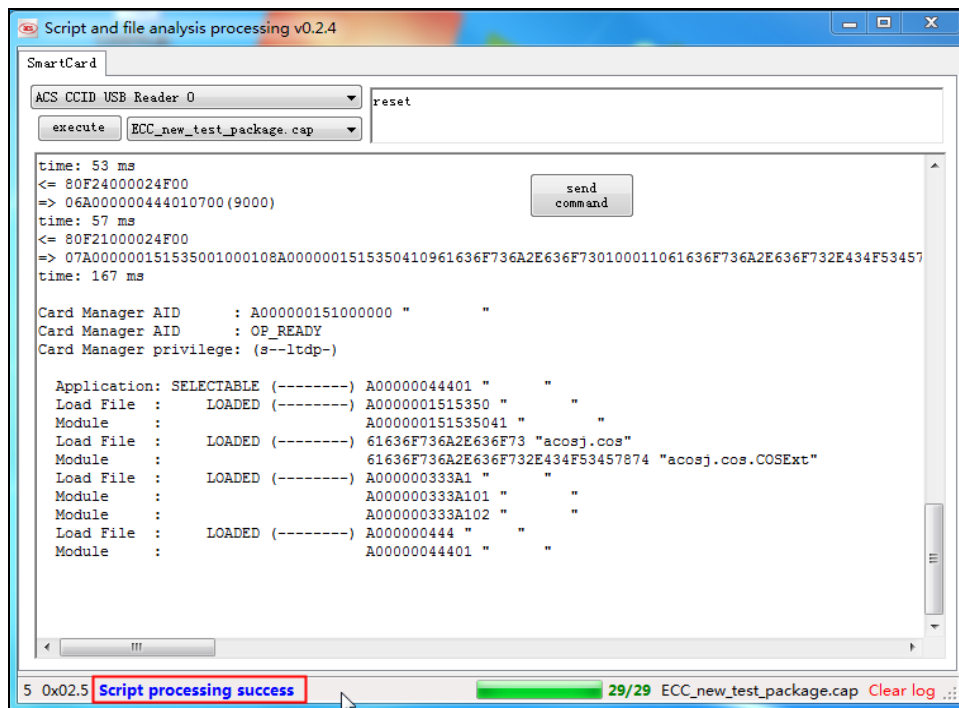


- Input details for **Instance Aid**, **Application Specific Parameters** and check options for **Application Privileges**. Click **OK**.

Note: For more configuration settings, click **Advanced Set**. Input application parameters and click **OK**.



- Script processing will be established. Process details are shown in the interface.

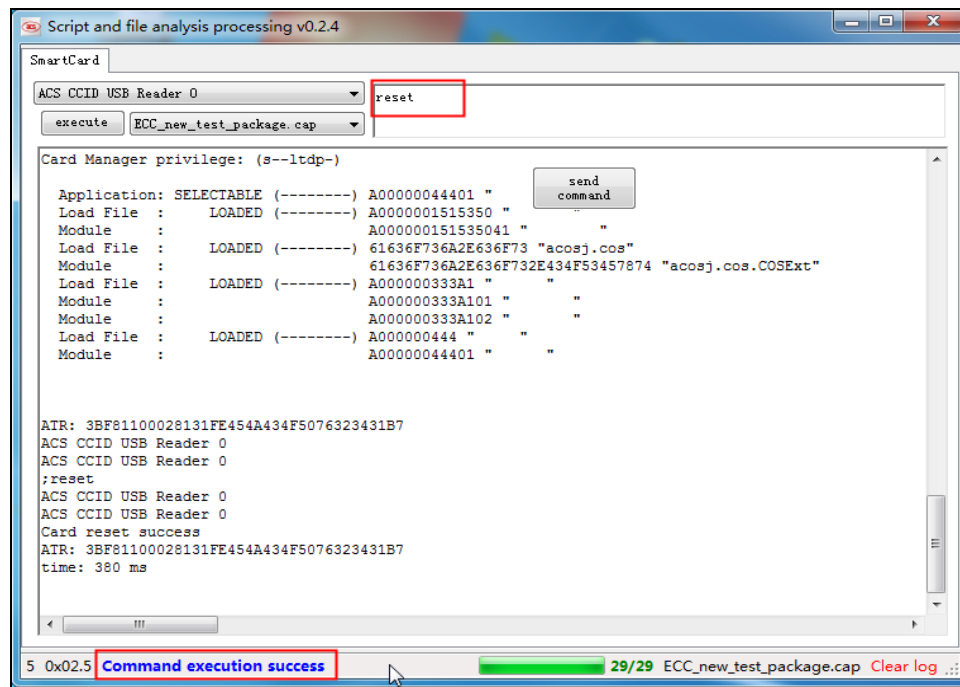


2.2. Send commands

The following are some commands you can send after opening a CAP file and establishing a script process.

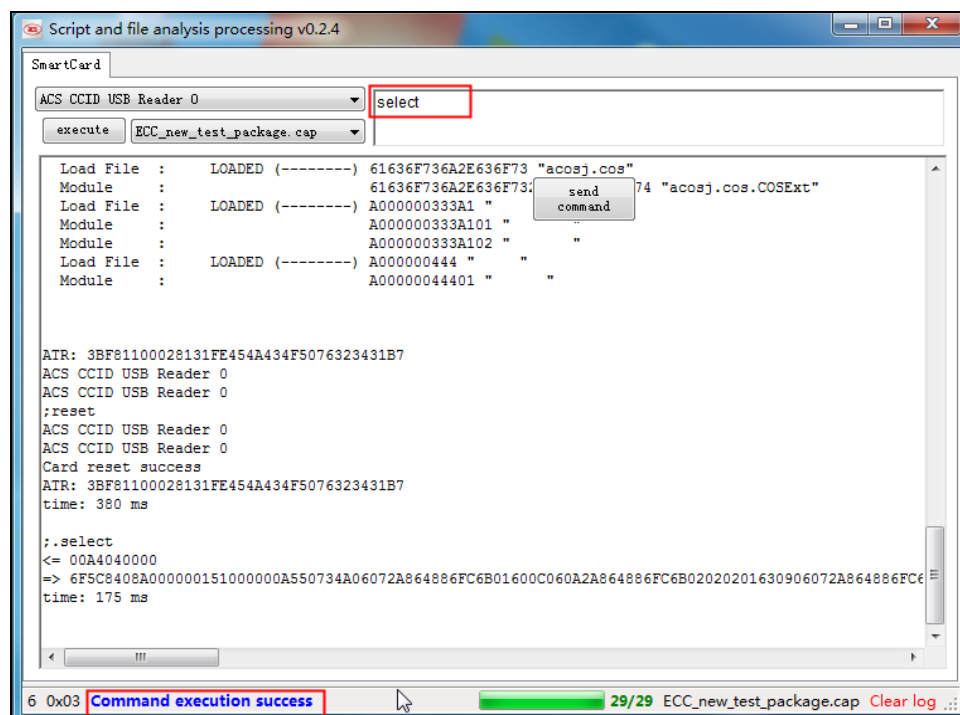
2.2.1. Reset

Input **reset** in the command box to reset the settings of the smart card, then click **send command**.



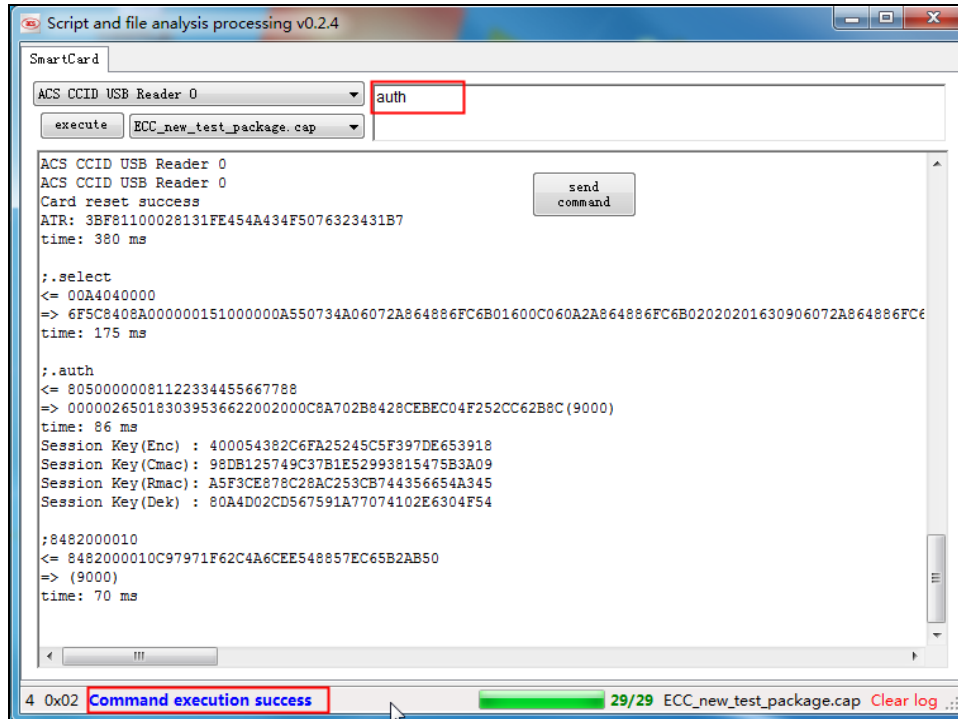
2.2.2. Select

Input **select** in the command box to select a smart card, then click **send command**.



2.2.3. Auth

Input **auth** in the command box to authenticate properties of the smart card, then click **send command**.



2.2.4. Card

Input **card** in the command box to manage card parameters of the smart card, then click **send command**.

