



Advanced Card Systems Ltd.
Card & Reader Technologies

ACM1281

Contactless Reader Module with SAM Slot



User Manual V1.03



Table of Contents

1.0.	Introduction	3
2.0.	Pin Assignment	4
2.1.	Configuring the LED operations status.....	4
2.1.1.	LED Behaviors	4
2.2.	Connect ACM1281 to another device via USB (applicable for ACM1281U-C only)	5
2.3.	Connect ACM1281 to another device via serial port (applicable for ACM1281S-C only)	7
3.0.	Minimum Distances from Conductive Materials.....	9

List of Figures

Figure 1 :	ACM1281 Main Board.....	3
Figure 2 :	ACM1281 LED Configuration.....	4
Figure 3 :	ACM1281U-C via USB Interface.....	5
Figure 4 :	Dimension of connector socket J2 soldered onto PCB	6
Figure 5 :	Male plug (USB cable side) of J2 (Unit: mm)	6
Figure 6 :	ACM1281S-C via Serial Interface	7
Figure 7 :	Dimension of connector socket J5 soldered onto PCB	8
Figure 8 :	Male plug (RS-232 cable side) of J5 (Unit: mm).....	8

List of Tables

Table 1 :	Recommended Minimum Distances from Conductive Materials.....	9
------------------	--	----------

2.0. Pin Assignment

2.1. Configuring the LED operations status

There are two LEDs on ACM1281 to display its operation status:

- **Red** is for power
- **Green** is for smart card operation

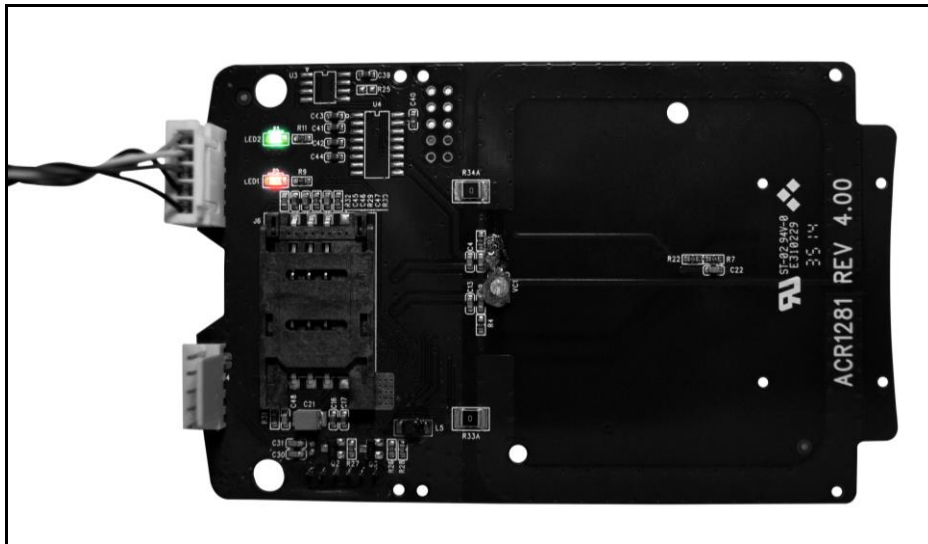


Figure 2: ACM1281 LED Configuration

2.1.1. LED Behaviors

To control the LED's output and checking the LED's behavior for smart card operation status, you may refer to the following document:

- ACM1281U-C: ACR1281U Reference Manual
- ACM1281S-C: ACR1281S Reference Manual

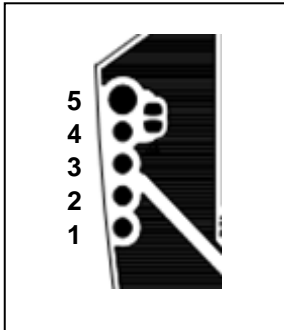
The reference manuals will discuss the detail how PC/SC APDU commands were implemented for the contactless interface and device peripherals of ACM1281U and ACM1281S.

2.2. Connect ACM1281 to another device via USB (applicable for ACM1281U-C only)

A USB port is available to connect the ACM1281 to other peripheral or devices.

To do this:

1. Connect socket **J2** via USB cable to another peripheral device (see **Figure 3**).



Pin	Description
1	+5V Power Supply
2	USB D-
3	USB D+
4	GND
5	GND

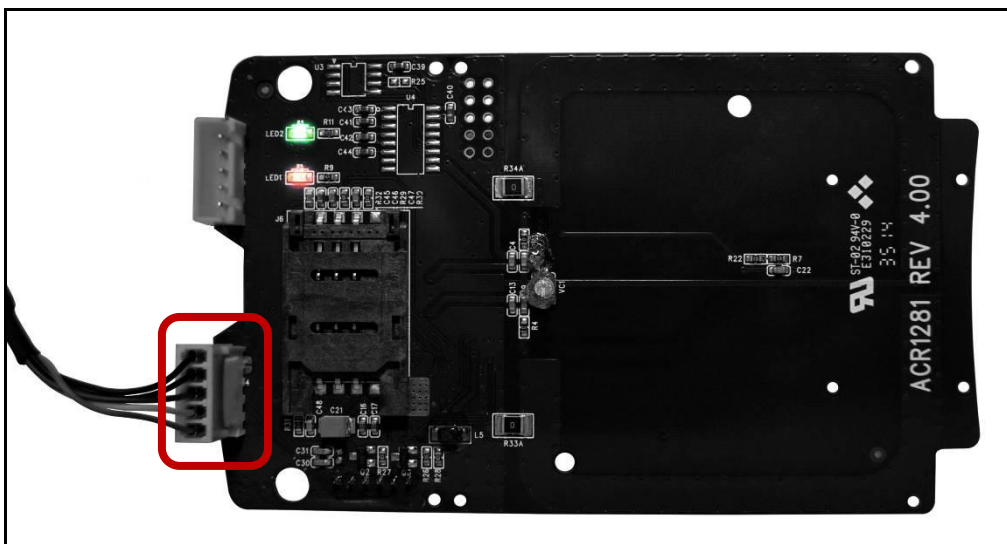


Figure 3: ACM1281U-C via USB Interface

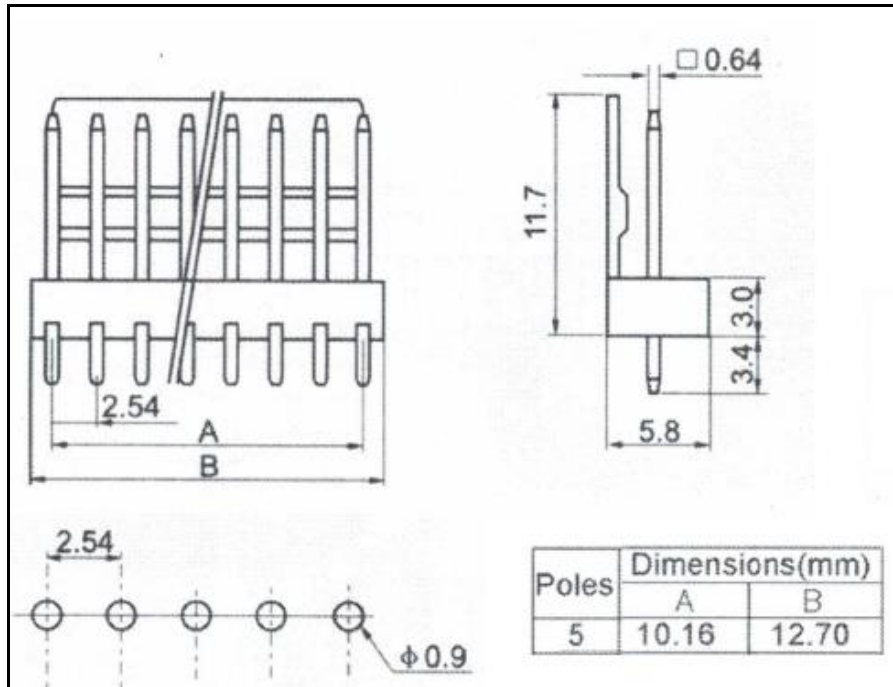


Figure 4: Dimension of connector socket **J2** soldered onto PCB

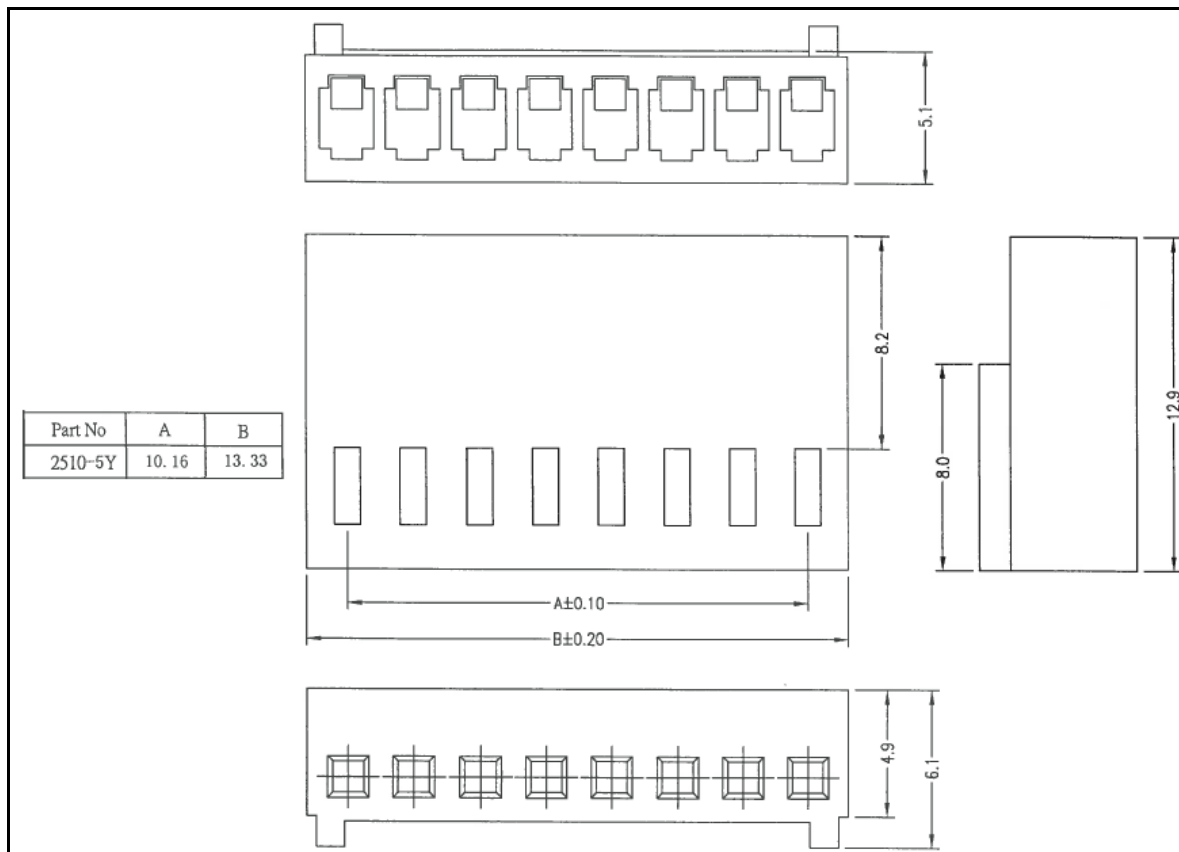


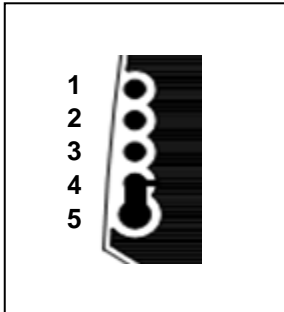
Figure 5: Male plug (USB cable side) of **J2** (Unit: mm)

2.3. Connect ACM1281 to another device via serial port (applicable for ACM1281S-C only)

A serial port is available to connect the ACM1281 to other peripheral or devices.

To do this:

1. Connection socket **J5** via RS-232 cable to another peripheral device (see **Figure 6**).



Pin	Description
1	+5V Power Supply
2	RS-232 RXD
3	RS-232 TXD
4	GND
5	GND

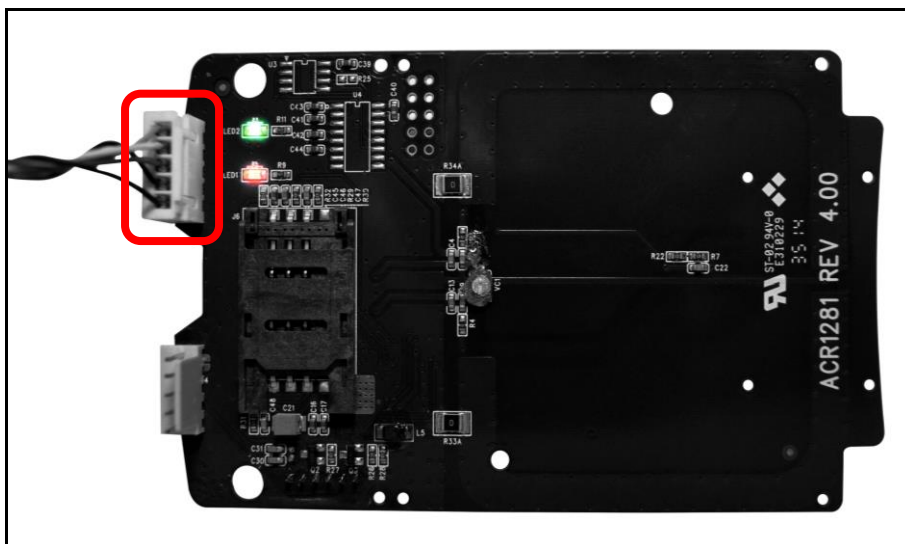


Figure 6: ACM1281S-C via Serial Interface

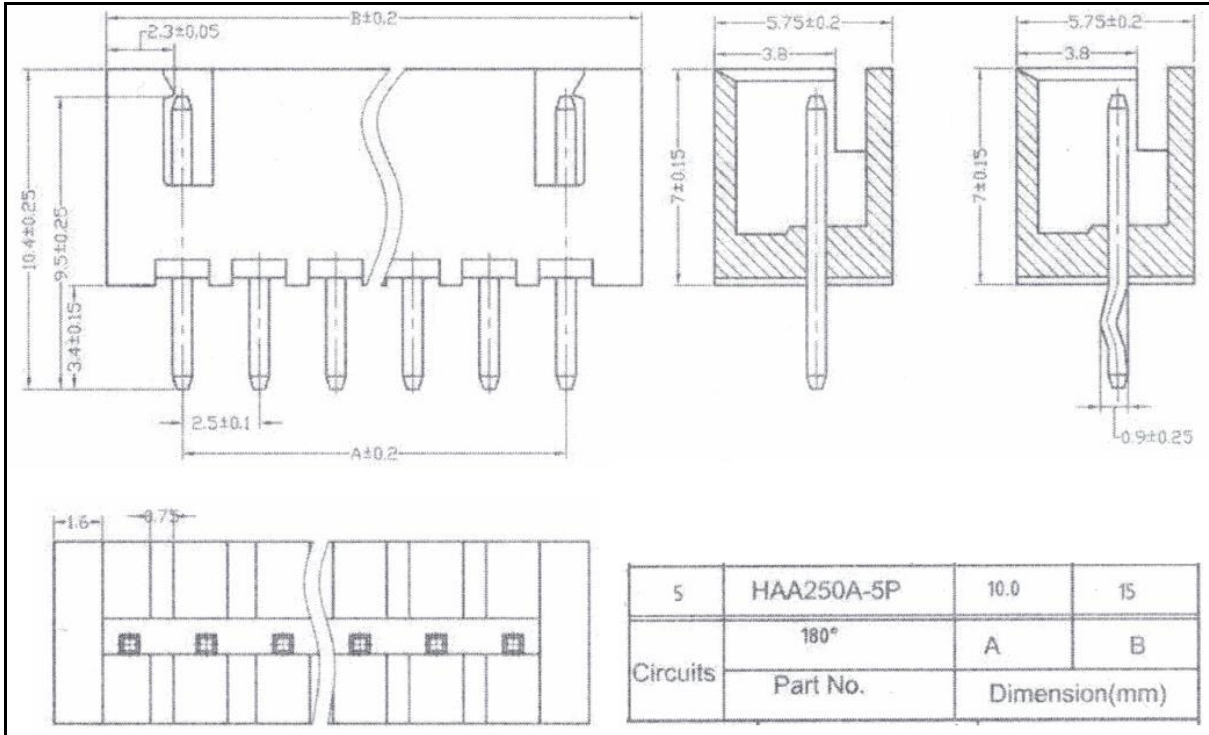


Figure 7: Dimension of connector socket **J5** soldered onto PCB

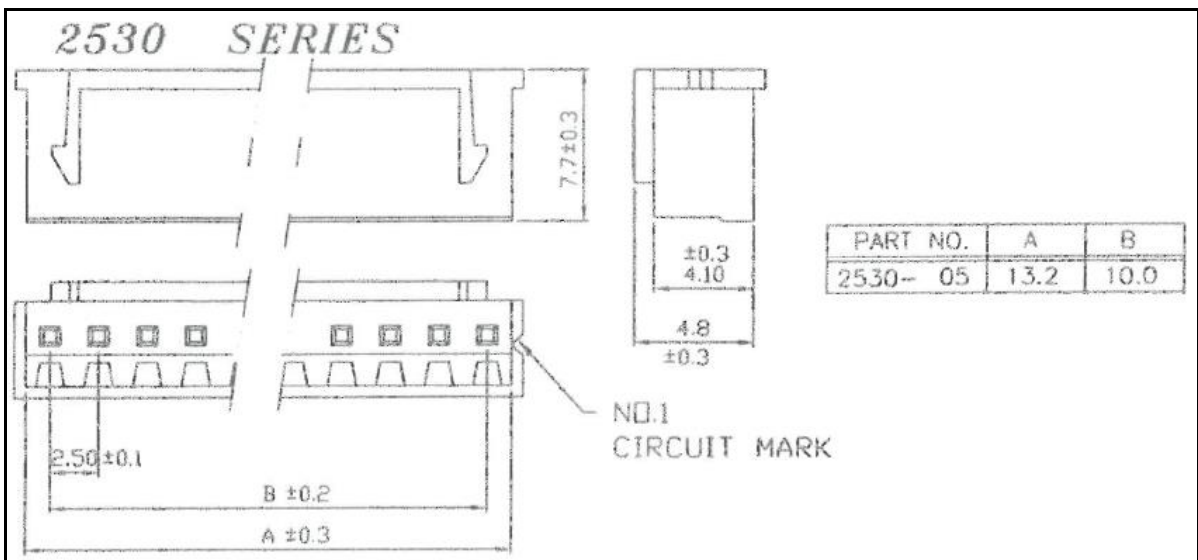
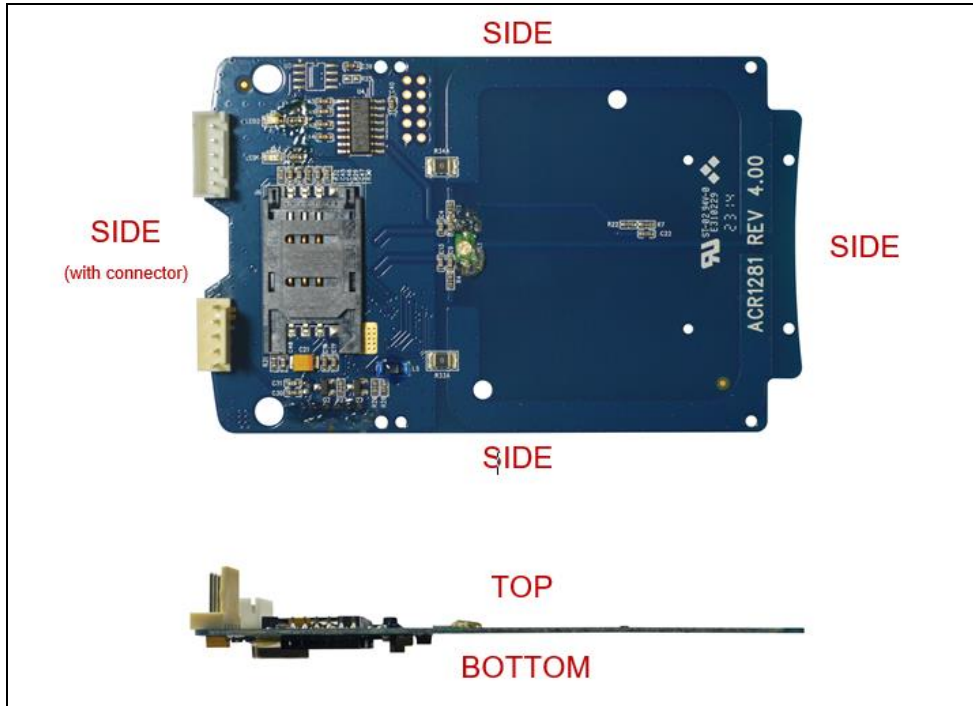


Figure 8: Male plug (RS-232 cable side) of **J5** (Unit: mm)

3.0. Minimum Distances from Conductive Materials

The figure below illustrates the recommended minimum distances of the ACM1281 board from conductive materials.



Location	Minimum Distance
Sides	20 mm
Side (with connector)	5 mm
Top and Bottom	40 mm

Table 1: Recommended Minimum Distances from Conductive Materials